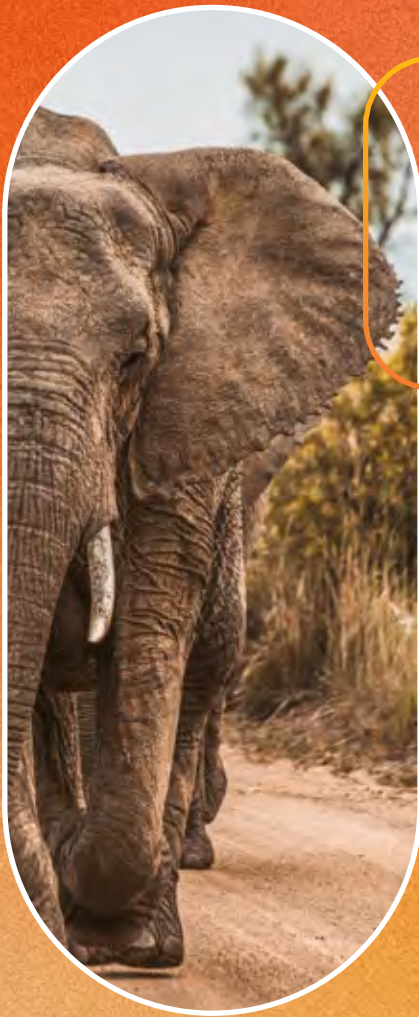


Sustainability Report

2023 - 2024





**Wherever we are, we are
always local.**

Contents

01

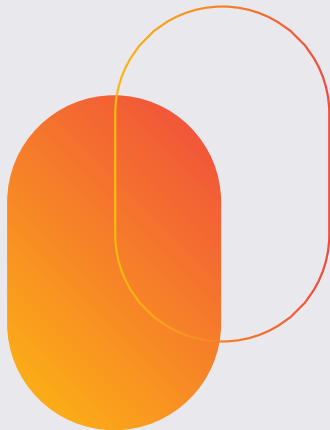
Introduction

- 07 Message from the Group CE
- 08 The future of travel
- 10 Our vision

02

About Tourvest

- 11 SDG Goals
 - Tourvest Selected UNSDGs
- 15 Unpacking Tourvest
- 16 Tourvest organisational structure
- 18 Who we are
- 20 The global impact of tourism
- 22 Living our purpose
 - Committed to our communities
 - Committed to local procurement
 - Our pledge
 - Our collaboration partners
 - Living our values



TOURVEST
INTEGRATED



03

**2024 Financial
Performance**

04

**Community
Development
Initiatives**

05

**Environmental
Initiatives**

06

**Entrepreneurship
Initiatives**

07

**Socio-Economic
Development
Initiatives**

08

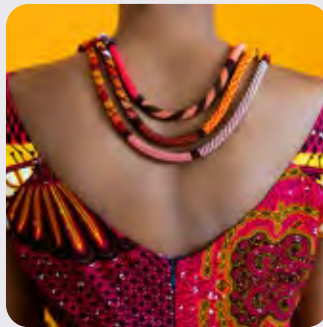
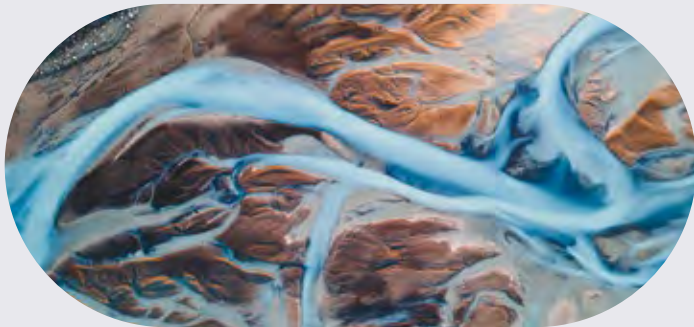
**Skills Development
Initiatives**

09

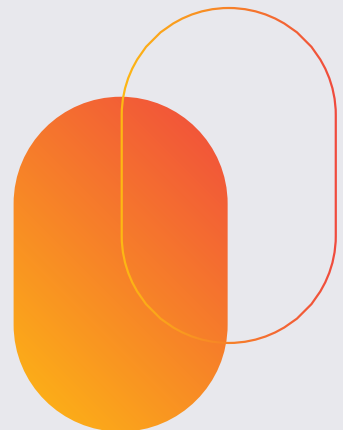
**Wellness
Initiatives**

10

Awards



TOURISM
GROUP



01

Introduction

Message from the Group CE
The future of travel
Our vision
SDG Goals



Image: Adobe Stock

MESSAGE FROM

THE GROUP CE

Luvhengo Neswiswi | Group CE



As the global tourism industry evolves towards greater sustainability, Tourvest is proud to be at the forefront of this transition. Throughout our Group, we are implementing a range of initiatives designed to promote tourism that benefits communities, respects the environment, and delivers enriching experiences for all participants in the tourism value chain.

The tourism sector holds significant potential to contribute to a sustainable future. Our ongoing success is vital not only to the economies in which we operate, but also to the well-being of people, the preservation of our planet, and the prosperity of the communities we serve.

Our commitment to sustainable development is underpinned by responsible investment and the adoption of sustainable business practices. This commitment is clearly articulated in our focused and forward-looking Sustainability Strategy.

We recognise that the path to a low-carbon future is both long and complex, but we are dedicated to contribute towards reduction of carbon emissions by investing in advanced technologies and systems that would enable us to monitor and mitigate our carbon footprint. The installation of biogas digesters for rural households in Victoria Falls, Zimbabwe confirms our commitment for this mission and upliftment of our communities.

Furthermore, our strategy seeks to encourage behavioural change, inspiring progress in the preservation of the environment, as well as the safeguarding of local cultures and languages.

Collaborative partnerships remain central to our approach, and we continue to engage with a broad spectrum of stakeholders to enhance the shared value of our destinations. These efforts underscore the positive ripple effects of tourism, including the promotion of social cohesion.

Tourvest partnered with Non-Profit Organisations, National and Provincial Parks to not only

raise awareness for conservation efforts supporting causes like rhino protection but also to stimulate economic growth in local communities. Through these partnerships, Tourvest has helped generate jobs while channelling the proceeds to credible conservation and social upliftment initiatives. This approach further demonstrates Tourvest's commitment to both environmental conservation and community development.

I am pleased to announce the establishment of the Tourvest Foundation. The Foundation will be responsible for overseeing the implementation of our Sustainability Strategy and supporting the divisions with their Corporate Social Investment (CSI) initiatives. Our dedication to embedding Environmental, Social, and Governance (ESG) principles into our culture, operations, and strategic direction is evident not only in the achievements highlighted in this report but through our commitment to contribute to achieving what we deem as the most material United Nations Sustainable Development Goals.

Responsible tourism necessitates a fundamental shift in the way we approach travel. At Tourvest, we are committed to laying the foundation for a future in which tourism flourishes alongside the preservation of cultural and environmental heritage, ensuring that our planet remains a vibrant and welcoming destination for generations to come.

I extend my sincere gratitude to all our stakeholders for their steadfast dedication and support of our initiatives.

Ndaa!

Luvhengo Neswiswi

The Future of Travel

The 2024 Backslash "Future of Travel" report outlines a transformative shift in the travel industry, moving from high-volume tourism to more purposeful, meaningful, and eco-conscious experiences. Tourvest Integrated Tourism Group is well-positioned to seize the opportunities presented by these trends.

01

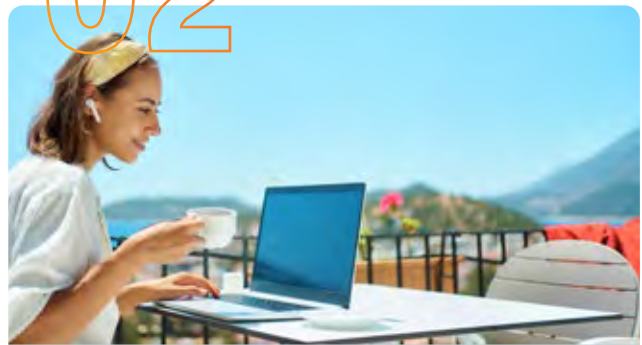


THE GREAT REDEMPTION: Prioritising Responsible & Mindful Tourism

The report highlights the rise of "mindful tourism," where travellers are more conscious of their impact on destinations, cultures, and the environment.

Tourvest can respond by offering eco-friendly, low-impact travel packages that emphasise sustainability and cultural respect. This includes small group tours, partnerships with local communities, and experiences that focus on environmental preservation. By embracing responsible travel, Tourvest can appeal to the growing number of travellers who seek to minimise their ecological footprint and engage with local cultures in a more meaningful way.

02



ANCHORLESS LIVING: Catering to Remote Workers & Digital Nomads

As the trend toward remote work continues to grow, "anchorless living" has become a significant opportunity in travel. More people are combining work and leisure, seeking long-term stays with flexibility and convenience. Tourvest could capitalise on this by developing "workation" packages that cater to digital nomads and remote workers, offering high-speed internet, coworking spaces, and flexible accommodation options. By tapping into this market, Tourvest can position itself as a leader in the emerging remote work travel segment, which is expected to grow in the coming years.

03



TRAVEL'S TURN INWARD: Expanding Wellness & Transformative Experiences

The report indicates a rising interest in wellness tourism, where travellers are seeking experiences that promote mental, physical, and emotional well-being. Tourvest could expand its portfolio to include wellness retreats, yoga and meditation experiences, and mental health-focused getaways. Additionally, offering immersive, transformative travel experiences—such as culinary tours, spiritual journeys, or psychedelic retreats—would appeal to travellers looking for personal growth and holistic well-being. By developing these wellness-driven offerings, Tourvest can meet the increasing demand for travel that prioritises self-care and rejuvenation.

04



Images: Adobe Stock

DESTINATION UNKNOWN: Offering Unique & Boundary- Pushing Adventures

The report highlights a desire for unique, off-the-beaten-path destinations as travellers seek novelty and adventure. Tourvest can leverage this trend by offering customised, adventurous escapes to remote or lesser-known locations. These could include guided tours to hidden natural wonders, remote cultural experiences, and even virtual or hybrid travel experiences that blend physical and digital adventures. With the rise of "exploratory tourism," Tourvest can attract high-end travellers seeking new frontiers and experiences that provide a sense of discovery and exclusivity.

Tourvest's Future-Ready Approach

By aligning its offerings with the four key trends outlined in the 2024 "Future of Travel" report, Tourvest Integrated Tourism Group can successfully adapt to the evolving travel landscape. With a focus on sustainability, wellness, flexibility, and adventure, Tourvest can cater to the modern traveller who prioritises experiences that are not only enjoyable but also enriching and impactful. This strategic alignment will position Tourvest as a leader in the future of tourism, driving both customer satisfaction and long-term growth.

→

Our vision

Image: www.freepik.com



Tourvest is committed to being a responsible corporate citizen of the communities and the environment in which we operate. We realise that our continued success is not just the outcome of how we perform operationally or financially but also on a demonstrable commitment to a positive and mutually beneficial relationship with every stakeholder affected by our business and the environment's well-being.

To this end, one of Tourvest's key strategic imperatives is to impact the long-term sustainability of society positively, particularly the communities in which Tourvest operates, and the tourism attractions on which much of our business is based.

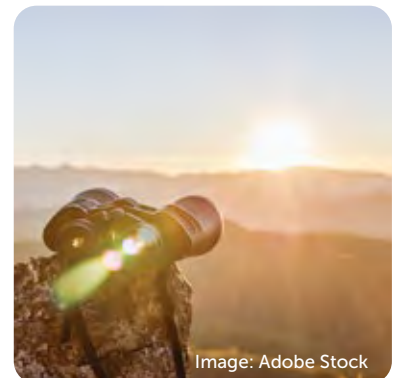


Image: Adobe Stock

SDG

Sustainable Development Goals

The Sustainable Development Goals (SDG), Education for Sustainable Development (ESD) and Corporate Sustainable Investment (CSI) are three interconnected frameworks that aim to address various aspects of sustainable development and create a positive impact on society and the environment.

The SDGs are a set of 17 global goals established by the United Nations. They aim to create a sustainable future for all by addressing global challenges such as poverty, climate change, and inequality. The SDGs provide a framework for governments, businesses, and civil society to work together to achieve sustainable development.

Tourvest Selected UNSDGS

The 2030 Agenda for Sustainable Development Opens a new window adopted by all United Nations Member States in 2015, provides a shared blueprint for peace and prosperity for people and the planet, now and into the future. The 17 UNSDGS are integrated, indivisible and balance the three dimensions of sustainable development: the economic, social and environmental.

Therefore, as Tourvest we looked thoroughly to all 17 Goals and understood that it may not be attainable to focus on all 17 Goals, after our systematic analysis, we realised that it will be relevant to select the relevant goals linked to the tourism sector to sustain the tourism economy.

Tourvest selected 8 UNSDGS as Primary Goals and 3 UNSDGS as Secondary Goals. All the selected goals are intertwined to the tourism and hospitality sector. Sustaining the environment is significant in sustaining the tourism economy.

Our selected SDGs are summarised as follows:

TOURVEST PRIMARY SDGS:

The selected SD Goals are directly aligned to the tourism sector and valuable to sustain the environment and tourism economy for future generations.



TOURVEST SECONDARY SDGS:

These selected goals will be focusing on uplifting both internal and external stakeholders especially our partners e.g. employees, communities etc.



Education for Sustainable Development

ESD is an educational approach that promotes sustainable development through teaching and learning. It encompasses a wide range of educational practices and initiatives that foster knowledge, skills, attitudes and values necessary for individuals and communities to understand and address global challenges related to sustainability. ESD integrates the principles and practices of sustainable development into all aspects of education, including formal, non-formal and informal settings. It emphasises the interconnectedness of social, economic and environmental issues and encourages critical thinking, problem-solving and collaboration.

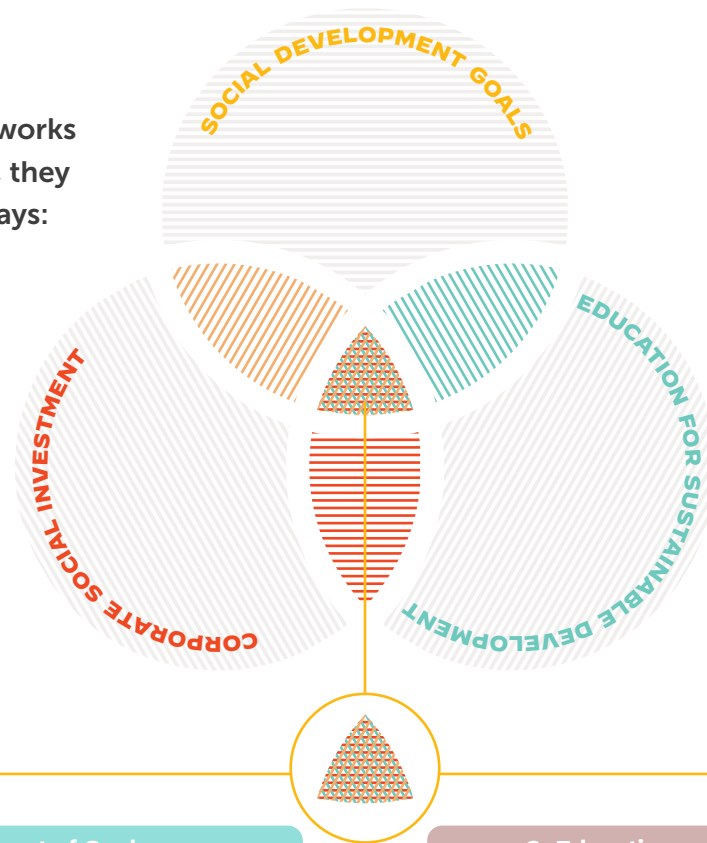
Corporate Sustainable Investment

CSI is a company's voluntary contribution to sustainable, social, economic, and environmental well-being that goes beyond the company's core business operations. CSI activities typically include donations, sponsorships, and charitable initiatives that aim to benefit communities and society.



Image: Unsplash | Stefan Kunze

While all three frameworks have distinct focuses, they intersect in several ways:



1. Alignment of Goals:

The SDGs provide a comprehensive framework for global development, covering a wide range of interconnected issues such as poverty, education, health, gender equality, climate change and more. ESD seeks to integrate sustainable development principles into education systems, fostering knowledge, skills and values necessary for individuals to contribute to sustainable development. CSI refers to the strategic investment made by businesses to address social and environmental challenges. All three frameworks aim to promote sustainability and create a better world.

2. Education and Awareness:

ESD is crucial in raising awareness about the SDGs and promoting sustainable practices. Education institutions, in collaboration with the corporate sector, can incorporate ESD principles into their programmes to equip individuals with the knowledge and skills required to achieve the SDGs. CSI initiatives can support ESD efforts by funding educational programmes and campaigns focused on sustainable development, thus creating synergies between education and corporate social sustainability.

3. Collaboration and Partnerships:

Achieving the SDGs requires collaboration and partnerships among various stakeholders, including governments, businesses, civil society organisations and educational institutions. CSI initiatives often involve partnerships between companies and non-profit organisations to address social and environmental challenges. By aligning their efforts with the SDGs and integrating ESD principles, these partnerships can significantly impact sustainable development outcomes.

4. Reporting and Accountability:

The SDGs provide a common framework for monitoring and reporting progress towards sustainable development. CSI initiatives, when aligned with the SDGs, can contribute to this reporting process by measuring and communicating their impact on specific goals. ESD can play a role in fostering accountability by educating individuals about the importance of monitoring progress, engaging in sustainable practices, and holding organisations accountable for their social and environmental impacts.

02

About Tourvest



Unpacking Tourvest
Tourvest organisational structure
Who we are
The global impact of tourism
Living our purpose

Unpacking Tourvest

Our roots are in Africa, but our reach extends all over the world.

Tourvest is Africa's leading integrated tourism group. Its operating businesses include travel management companies, hotels, lodges, and restaurants as well as craft, curio, and jewellery shops and foreign exchange bureaux. The group operates under some 60 sector-leading brands.

The group was created in 1997 through the amalgamation of several long-established tourism companies. That same year, Tourvest listed on the Johannesburg Stock Exchange. In August 2008, Tourvest delisted from it, following an acquisition by a black economic empowerment consortium comprising Guma, the Industrial Development Corporation (IDC) and Old Mutual Private Equity (OMPE).

Tourvest's steady growth as a leading integrated tourism group has been driven by its commitment to exceptional quality, service, and value, its people-centred business philosophy, the development of mutually rewarding partnerships, constant innovation, and world-class technology.

Headquartered in South Africa, it has operations in Southern, East, and West Africa, India, the United Kingdom, the Caribbean, Madagascar, and New Zealand, as well as principals, associates, and clients worldwide.

Tourvest is unique as it is the only organisation with a presence in every facet of the travel and tourism value chain. Due to this, the company is well-placed to assist the tourism sector in addressing issues related to conserving of our natural environment and heritage and the rising challenges of poverty, unemployment and inequality.

Tourvest is an entrepreneurial business. Each division is run as an autonomous business unit, with separate boards supported by head office. Four of the six divisions are located in the same business park, providing opportunities for collaboration and growth for all stakeholders.

→



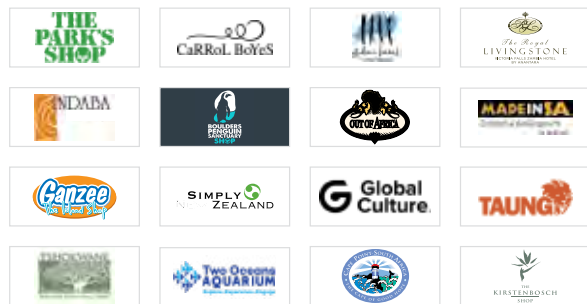
Tourvest Organisational Structure



Tourvest Travel Retail

Tourvest Travel Retail is an international business that caters to the travelling consumer's retail requirements. It does so through four sub-divisions:

DESTINATION RETAIL STORES:



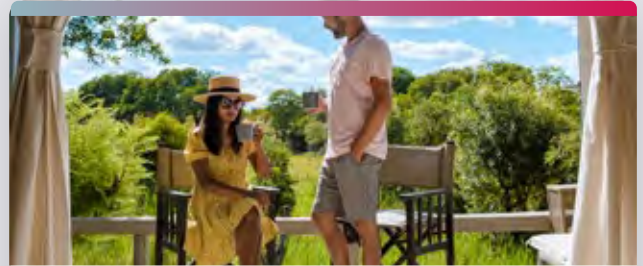
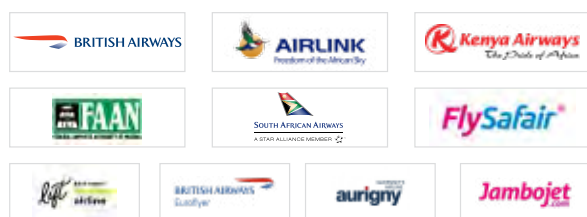
RESTAURANTS & TAVERNS:



DESTINATION RELATED GIFTING:



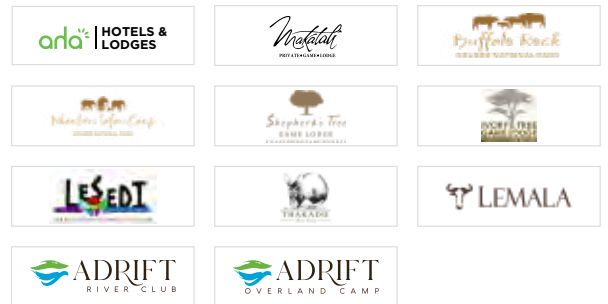
DESTINATION & AIRPORT:



Tourvest Accommodation

Tourvest's Accommodation division supplies accommodation across 5 African countries, laying claim to some of the finest accommodation options in East Africa, South Africa & Zimbabwe. The collection of lodges, tented camps and hotels are operated by three brands across the continent (aha in South Africa, Wild Horizons in Zimbabwe and Lemala in East Africa).

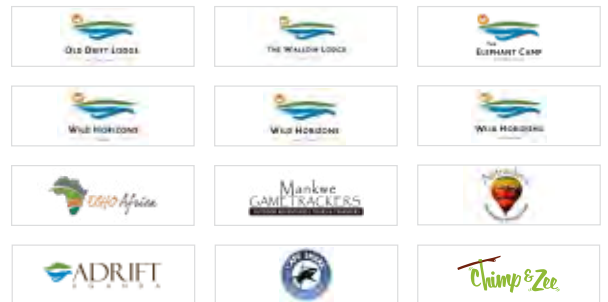
ACCOMMODATION:



Tourvest Adventures

Tourvest's Adventures division operates and owns an exhilarating variety of experiences across 5 African countries.

EXPERIENCES:



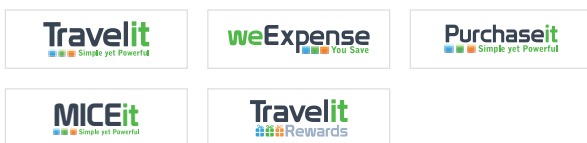
Structure



Tourvest Travel Services

Through our respected brands and global infrastructure, we can provide a tailored and flexible solution to meet your Travel Management needs, whether it is through traditional operations or the more cost-effective online procurement systems. Our sophisticated online travel management tools assist in travel policy compliance control and provide big data to ensure that you're always getting the absolute best value for your spending.

TECHNOLOGY SOLUTIONS:



LEISURE TRAVEL:



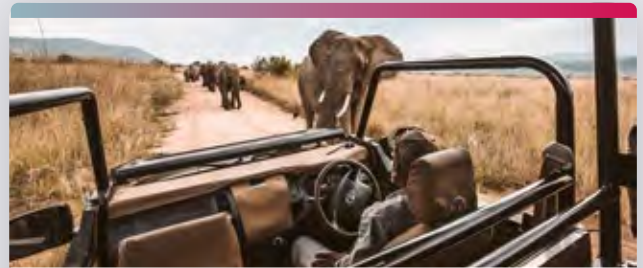
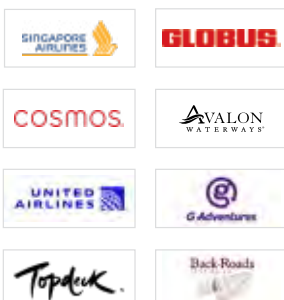
TRAVEL MANAGEMENT:



M.I.C.E:



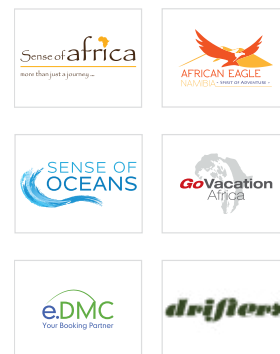
GSA:



Tourvest Destination Management

Tourvest Destination Management is a global travel management business specialising in touring, leisure travel (inbound into Africa) and sports tourism (inbound and outbound) through our family of specialist brands.

INBOUND LEISURE:



OUTBOUND LEISURE:



Tourvest Financial Services

Tourvest Financial Services (Pty) Ltd. is an Authorised Dealer with Limited Authority (ADLA) with SARB to supply and exchange currencies to inbound and outbound travellers. TFS purchased Travelex Africa outright, which is now known as Travel Forex (Pty) Ltd. It operates as a major agent for Western Union money transfers, with a network of more than 56 branches located at strategic tourism locations and airports.

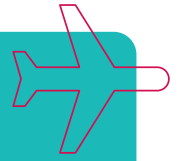


Who we are



TOURVEST

Travel Services



TTS is the travel management division within the Tourvest Group, and a frontrunner in the travel technology innovation space. In repositioning itself as a tech company that delivers travel solutions, TTS has developed Travelit. This platform enables an end-to-end corporate travel management service, from enforcing travel policy at all stages of a booking, through to cost accounting and reporting, as well as keeping track of travellers should emergency assistance be required.

→

TOURVEST

Financial Services

TFS operates under the Travelex brand name in South Africa. It is the market-leading foreign notes trader, offering simple, competitive, and transparent service to leisure and corporate travellers. TFS specialises in the supply of foreign currency notes, the Cash Passport travel card, and money remitting through Western Union.

→



TOURVEST

Destination Management

TDM is a reputable, reliable and trusted global travel management company with over 32 years' experience in the travel and tourism industry and is dedicated to creating and delivering world-class travel experiences with a distinctly African soul.

→





TOURVEST

Accommodation

Offering a wide array of products through facilities owned or managed by Tourvest, complemented by a portfolio of hotels and lodges in key tourist destinations throughout Southern and Eastern Africa.

→



TOURVEST

Adventures



A renowned division housing a remarkable portfolio of brands, each specialising in unique and captivating travel experiences, from the untamed beauty of Kruger National Park to the awe-inspiring wonders of Cape Town and Victoria Falls. Tourvest Adventures encompasses decades of expertise in the tourism industry and delivers world-class services, ensuring that every journey is an unforgettable adventure filled with unforgettable moments.

→



TOURVEST

Travel Retail



This division focuses on creating and developing retail brands built around specific destinations, providing customers with a strong sense of place and a unique retail experience. Having operated within the Transumer® gifting space for over 45 years, it has an unparalleled depth of experience in this specialist niche market. TTR is an internationally acknowledged expert in destination retail and the leading proponent of such retail on the African Continent.

→



The Global Impact of Tourism

Why Tourism is so Important

Image: Adobe Stock

Tourism is a powerful force shaping economies, societies, and the environment globally, potentially creating jobs for a wide range of individuals, including youth and women.

We look at the current impact and prospects of tourism at a global level.

1. ECONOMIC IMPACT

Tourism significantly contributes to the global economy, accounting for 10% of global GDP and supporting approximately 330 million jobs worldwide. The industry fuels growth across related sectors, including hospitality, transportation, and retail, making it a crucial economic driver, especially in developing nations. Countries reliant on tourism benefit from foreign exchange earnings, which can boost infrastructure, services, and development. Additionally, the industry spurs regional development by creating jobs and improving local economies, particularly in rural or remote areas. However, tourism's reliance on infrastructure investment and resource allocation can strain local economies, especially in over-touristed regions.

The tourism industry is expected to embrace technology, with innovations like contactless services, AI-driven customer experiences, and digital marketing driving growth. Furthermore, countries will need to diversify their tourism offerings to reduce over-reliance on a single type of traveller and expand opportunities for domestic tourism.

2. SOCIAL AND CULTURAL IMPACT

Tourism promotes global cultural exchange, fostering understanding, tolerance, and mutual respect. It enables travellers to experience diverse traditions, arts, and cuisines, contributing to heritage preservation through tourism revenue. This helps local communities preserve and showcase their cultural assets, such as festivals, handicrafts, and historical monuments.

However, mass tourism can lead to the commodification of culture, diluting the authenticity of local traditions and customs to cater to tourist expectations. Crowded tourist destinations can also lose their cultural charm, negatively affecting the quality of life for residents.

In the future, tourism is likely to lean toward more authentic experiences, where travellers seek meaningful interactions with local cultures and contribute positively to the communities they visit. The rise of community-based tourism models, where locals directly benefit from tourism, will help preserve cultures and create more sustainable travel experiences.

3. ENVIRONMENTAL IMPACT

Tourism's rapid growth has placed significant pressure on the environment. Primary sources of environmental degradation include resource overuse, waste generation, and carbon emissions from transportation, especially air travel. Coastal and natural habitats often suffer from unchecked tourist activity, which can destroy ecosystems, soil erosion, and pollution. Popular destinations like national parks and beaches face the risk of over-tourism, which strains natural resources like water and leads to habitat destruction.

Sustainable tourism practices are increasingly necessary to mitigate these effects. The future of tourism will see an accelerated adoption of eco-friendly travel, focusing on ecotourism, where travellers engage with nature responsibly and contribute to conservation efforts. Advances in sustainable transportation, such as the growth of electric vehicles, greener air travel technology, and carbon-offset initiatives, will also help reduce the industry's environmental footprint. More destinations will also regulate visitor numbers and invest in conservation to balance tourism demand with environmental protection.

4. TECHNOLOGICAL AND INNOVATION IMPACT

The future of tourism will be shaped significantly by technological innovation. With the rise of artificial intelligence, virtual reality (VR), and augmented reality (AR), travellers can experience destinations in new ways, from virtual tours to AI-powered personalized itineraries. Technologies such as big

data analytics and smart tourism platforms will help destinations better manage tourist flows and improve the overall visitor experience.

Moreover, the development of contactless travel services, mobile-first solutions, and real-time information will enhance convenience, allowing for smoother and more efficient travel experiences. In the future, destinations will rely on technology to offer personalized, immersive experiences while managing tourist numbers to reduce overcrowding.

5. FUTURE OUTLOOK AND SUSTAINABLE TOURISM

Looking ahead, the future of tourism will be defined by sustainability and resilience. As environmental and social challenges become more prominent, the industry will need to shift toward more responsible practices, balancing economic growth with environmental stewardship and cultural preservation.

Key future trends include:

Eco-conscious travellers:

The growing awareness of climate change will push travellers to choose eco-friendly destinations, accommodations, and transportation options.

Slow travel:

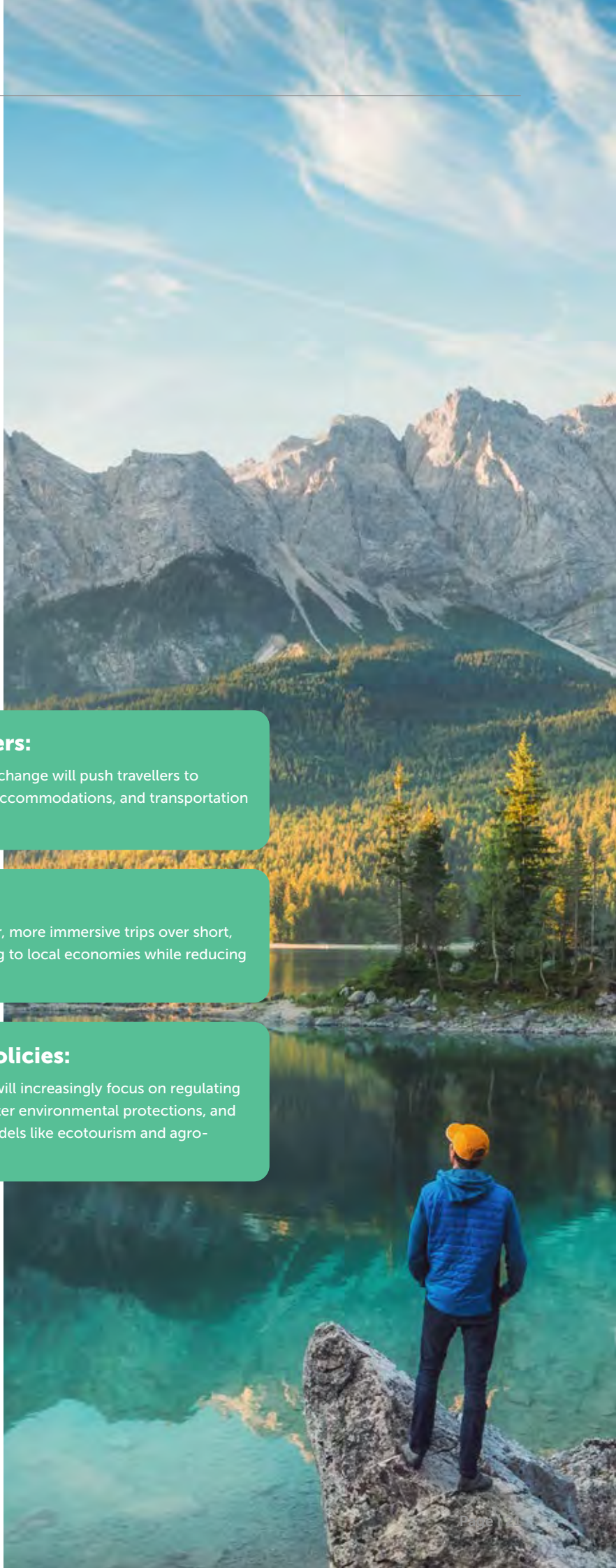
More travellers will prioritize longer, more immersive trips over short, high-impact vacations, contributing to local economies while reducing their carbon footprints.

Sustainable tourism policies:

Governments and tourism boards will increasingly focus on regulating tourism activities, introducing stricter environmental protections, and promoting low-impact tourism models like ecotourism and agro-tourism.

In conclusion, tourism remains a key global economic driver that has far-reaching effects on societies and ecosystems. However, as tourism continues to grow, so do the challenges, particularly concerning environmental degradation and cultural erosion. The future of tourism hinges on sustainability, technology, and responsible travel practices. By adopting more sustainable, inclusive, and innovative models, the global tourism industry can continue to thrive while reducing its negative impacts, ensuring that destinations remain viable for future generations.

→



Living our purpose

Committed to our Communities

Tourvest's continued success exemplifies its commitment to creating and sustaining long-term, mutually beneficial relationships with all its stakeholders and with the communities and natural environments in which it operates.

While promoting the tourism attractions on which much of our business is based, we remain vigilant and accountable in our economic, social and environmental responsibilities towards them and the communities who live around them and depend on them for employment.

Our accountability is lived through the DNA of our core business values and our company culture. Tourvest aims to contribute to the SDGs outlined by the UN positively agenda 2030.

Tourvest's sustainability approach is focused on the following areas:

CORPORATE RESPONSIBILITY

Realising that its continued success lies with the ability to play a leading role in developing the travel and tourism industry and supporting critical industry initiatives.

CORPORATE SUSTAINABLE INVESTMENTS

Including socio-economic development contributions as defined by the BEE Codes of Good Practice, aimed at positively impacting society.

NATURE CONSERVATION

Believing that by protecting Africa's natural heritage, it will assist in sustaining destinations that will become increasingly attractive to foreign visitors whose needs will further stimulate job creation and local economies.

COMMUNITY DEVELOPMENT

Particularly in the field of job creation through craft development and support for the Siyazisiza Trust as well as lodge ownership so that rural community members, in particular women, may share the success and growth of Tourvest.

EMPLOYEE VOLUNTEER PROGRAMMES

Increase the visibility and affinity of the Tourvest brand in the community while instilling the group's corporate culture and values among its employees.



Image: Adobe Stock

Especially in the areas of travel and tourism education, with a focus on developing skills at a grassroots level in an industry where quality consultants are becoming increasingly scarce.

Committed to local procurement

Ensuring a sustainable supply chain for our operations across Africa is paramount. At Tourvest we understand that there is increasing consumer demand for locally and ethically sourced products and produced without exploiting workers, children or the environment.

Our commitment to providing a range of enterprise development, support and outreach initiatives towards our local communities and suppliers remains unwavering.

Our retail division has almost 1200 suppliers, ranging from rural craft producers, SMMEs and artisans to iconic South African brands. Over the years, the division has built strong relationships and worked closely with them.

Many of the SMME suppliers are offered specific support from the 'Brand and Buying' teams in the form of:

- Finance
- Advice and outreach
- Guidance on demand patterns
- Market positioning and price points
- Merchandising requirements:
 - input is offered on packaging, display ideas and brand identity

These unique relationships ensure that the division delivers products that:

- Support and nurture emerging talent
- Are consistent, both from a quality and availability perspective
- Are ethically produced
- Focus on all categories of merchandise, ensuring variety and diversity
- Have a proven track record in terms of sales and popularity
- Deliver a consistent value proposition



Image: Adobe Stock



Image: Unsplash | Sneha Cecil

Our Pledge

COMMUNITY

Looking after our staff communities, the local communities we serve, and how we live as communities with our wildlife.

CONNECTION

What it is we do and, how and why we connect with people. We are building a bridge through tourism, leading to the preservation of wildlife and authentic experiences.

COLLABORATION

How we interact and work together as corporates with our communities.

Our Collaboration Partners



Tourvest Destination Management has been a member of Travelife since 2017, with the Tourvest Accommodation and Activities division signing up in 2020. The Travelife Sustainability System is an initiative dedicated to promoting sustainable practices within the travel and tourism industry. Travelife is a system which helps tour operators and travel agencies to manage and improve social and environmental impacts by complying with sustainability criteria.

The Travelife initiative is based on the central role of tour operators and travel agents in the tourism supply chain. Their unique position between suppliers and buyers enables them to influence consumer demand, procurement policies and the development of destinations. This allows them to contribute significantly to sustainable development and environmental and cultural protection in destinations.



Tourvest is a certified member of FTSA, a non-profit organisation which certifies tourism businesses that comply with the principles of fair trade and responsible tourism. FTSA awards a special label to qualifying businesses as a way of signifying their commitment to these principles (fair share, democracy, respect, reliability, transparency and sustainability) and related criteria, including fair wages and working conditions, fair purchasing, fair operations, equitable distribution of benefits and respect for human rights, culture and the environment.

By electing to stay at or use the services of FTSA- certified establishments, tourists can be assured that their travel benefits local communities and economies, and that the business is operated ethically and in a socially and environmentally responsible manner.



As part of its membership with the Fair Trade in Tourism South Africa (FTTSA), Tourvest is also a signatory to and a member of the Tourism Child Protection Code of Conduct (the Code), which aims to provide increased protection to children from commercial sexual exploitation in travel and tourism.

In South Africa, an estimated 30 000 children under the age of 18 are said to be victims of sexual exploitation. Tourvest believes that firm measures are needed to prevent further escalation of child sex tourism (CST).

The Code is a self-regulating instrument that can play an active role in the tourism industry. As a member, Tourvest seeks ways to establish an ethical corporate policy regarding sexual exploitation of children, training of personnel and introducing clauses in contracts with suppliers, stating a common repudiation of sexual exploitation of children. This is in addition to providing information to travellers through mediums such as brochures, posters and in-flight videos, as well as to local key persons at tourism destinations. We are committed to reporting annually on our involvement in preventing CST.



The tourism sector presents a number of income generating activities for women. Nevertheless, the challenge facing the industry is that women are primarily concentrated in the low-status, lower-paid and precarious positions in the sector. Tourvest believes that the industry is better positioned than other sectors of the economy to advance female representation in the formal sector, but the challenge remains to provide them with mentoring and educational opportunities to ensure their careers can progress meaningfully up the corporate ladder.

To this effect, Tourvest has played a leading role in the discussion of gender equity promotion in the sector by establishing a think-tank of the industry's female leaders. Additionally, we were instrumental in arranging the inaugural Women in Tourism Conference, established in 2015 by the National Department of Tourism in partnership with the Tourism Business Council of South Africa.

Living our values

While the respective divisions and the holding company each conduct their corporate sustainable investment (CSI) programmes, they all subscribe to the same underlying approach, which is focused on positively impacting the long-term sustainability of society, particularly the communities in which they operate.

Tourvest and its divisions allocate resources to sustainability initiatives based on the following objectives:

- To support sustainable social development through community development initiatives
- To enable the group (and its associated businesses and operations) to be a preferred business partner
- To be a corporate citizen valued by all its stakeholders

We do this while also ensuring that we maintain our purpose of

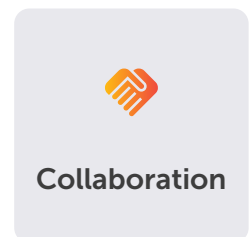
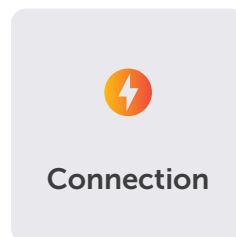


Image: Adobe Stock

03

2024 Financial Performance



2023 - 2024 Overview

Corporate Social Investment (CSI)

2024 R4,704,825

2023 R2,586,098

Enterprise and Supplier Development (ESD)

2024 R8,528,292

2023 R8,853,484

Skills Development

2024 R29,836,612

2023 R24,396,461

Tourvest invested robustly on skills development programmes that aims to develop skills for both internal skills and external individuals on various skills competencies required by the market.

Total Spend:

R35,836,043

↑ 10%

R43,069,729

2023

2024

CSI increased with:

R2,118,727 ↑

ESD decreased with:

-R325,192 ↓

Skills Development increased with:

R5,440,151 ↑

Community Development Initiatives

Tourvest's mandate is aimed at addressing household poverty by safeguarding and supporting the poor, addressing inequalities by championing rights and opportunities, and building prospects for social inclusion within our host communities. Through our strategic interventions in the social upliftment of citizens residing within our host communities, Tourvest's mandate has consistently been reaffirmed incorporating all key strategic frameworks cascaded from all spheres of government. Community development is catalytic to the advancement of our targeted host communities.





Breaking Educational Barriers with Bikes4Schools.

JINJA, UGANDA

Wildwaters and Adrift, in partnership with Coop Africa (Cycling out of Poverty), support the Bikes4Schools project in Jinja, Uganda. This initiative provides bicycles to students who travel over 10 km daily to attend school. By enabling faster commutes, students arrive energised and with more time for studies and household duties. The project also fosters a sense of responsibility as students contribute a small fee for the bicycles. Continuous follow-ups ensure the bicycles are well-maintained and effectively used.

Impact: The provision of bicycles has significantly reduced students' travel times, enabling them to focus more on their education and personal growth. It has also improved school attendance and academic performance, fostering a sense of student responsibility and pride.



Innovative Recycling: Supporting Schools and the Environment.

ELUWAI SCHOOL, MINJINGU, NEAR TARANGIRE NATIONAL PARK, TANZANIA

Lemala Camps and Lodges, in collaboration with Dunia Designs, have been transforming single-use plastic waste into durable school desks for rural schools in Tanzania since 2019. This initiative addresses two pressing issues: reducing plastic waste in national parks and furnishing classrooms with durable furniture. Over 300,000 water bottles have been recycled, producing nearly 200 school benches. Contributions from industry partners enabled the donation of 20 desks, three teachers' tables, and five chairs to Eluwai School in Minjingu, near Tarangire National Park.

Impact: This initiative has removed significant amounts of plastic waste from the environment, repurposing it into durable school furniture. Benefitting students and teachers, the project has equipped classrooms with essential resources while promoting sustainability and community support.



Images: Lemala Camps and Lodges

Empowering Communities through Banana Leaf Innovation.

MTO WA MBU, TANZANIA

Lemala Camps and Lodges have collaborated with a local entrepreneur, Sunday, and a women’s cooperative to create biodegradable lunch boxes made from banana leaves.

This innovative solution reduces waste generated by packed lunches provided to clients while supporting the local community.

Banana leaves, a by-product of the abundant plantations in the area, are

traditionally used for weaving, cooking, and crafts. Sunday organised women in the village into a cooperative, providing them a sustainable income by crafting these eco-friendly boxes.

Lemala has supported this initiative by helping Sunday establish his business, set up bank accounts, and manage finances effectively.

Impact:

The project has created a sustainable solution to waste reduction while providing a stable source of income for women in the community. It fosters financial independence and economic growth, benefiting both the environment and the local community.



Images: Lemala Camps and Lodges



Supporting Girls' Education: Sanitary Pad Project.

TANZANIA

Period poverty is a significant issue in rural Tanzania, where many teenage girls lack access to sanitary products. As a result, they often stay home during their periods, miss school and fall behind academically. This affects their attendance records and limits their future opportunities. To combat this, Lemala Camps and Lodges partnered with Upendo Women's Foundation to provide reusable sanitary pad kits and educational talks on personal hygiene and health.

Each kit includes:

- a colourful kitenge draw bag
- 2 pairs of underwear
- a winged pad holder
- 3 reusable cotton pads
- a bar of soap

Lemala educates its clients on period poverty through information documents, kit displays in curio shops, and conversations with staff. Clients are

encouraged to donate, with a **USD 10 contribution** providing one reusable sanitary pad kit for a girl in need.

Impact:

The project empowers young girls to take control of their education and future by addressing period poverty. Teachers report improved attendance and higher exam pass rates among beneficiaries, offering them a brighter future.



Images: Lemala Camps and Lodges

Advancing Communities through Sustainable Fishing.

KALAGALA, KASAMBYA & BUSOGA, UGANDA

At Lemala Wildwaters Lodge, our sustainable fishing initiative supports local communities while promoting ecological balance. Fishermen from Kalagala, Kasambya, and Busoga are incentivised to catch invasive species like Tilapia and Nile Perch, earning higher market rates for larger fish.

Since Tourvest acquired Wildwaters Lodge in 2013, we have been sourcing fish from the local community. In 2016, we formalised an agreement with the fishermen to purchase only fish over 1kg

at the standard market price in Kampala, which is higher than the village market price. Following the opening of River Club in 2022, we have significantly increased our fish purchases from local fishermen.

We purchase their catch directly at USD 3,5 per kg —above local market prices (USD 2,6 - USD 3) — ensuring fairness and immediate cash payment. This guarantees fresh fish for our kitchens and provides a consistent, reliable income for the fishermen.

Fishmongers like Nuru Nyanyonga and Namuganza also play a vital role by purchasing fish from local fishermen and supplying it to our lodge. Nuru, a mother of four, uses her earnings to provide for her family and secure her children's education.

Our chefs prepare freshly caught fish daily, serving it as a signature dish to guests while using any surplus for staff meals.

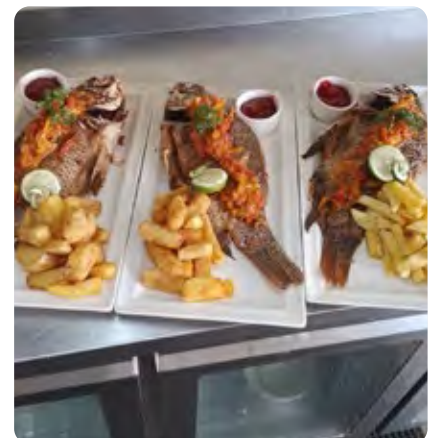


Impact:

Families benefit directly as income from the project supports education and daily needs, creating long-term community stability.

This initiative not only uplifts local families but also helps control invasive fish species, protecting the diversity of native aquatic life. By creating a reliable and fair market, the project fosters economic empowerment and sustainability for these communities.

Image: Adobe Stock



Images: Lemala Wildwaters Lodge



Shorobe Basket Centre



Strengthening Local Economies through Tourism.

NGAMILAND, BOTSWANA

Travel For Impact focuses on closing the socio-economic gap in Botswana's Ngamiland region by empowering small businesses to integrate into the tourism value chain. Through donor funding, small enterprises receive support to provide high-quality products and services for the tourism industry, creating a reliable and sustainable income for the business owners and their families.

Notable beneficiaries include the Ntlafatso Glass Recycling Project and Shorobe Basket Centre.

Impact: This initiative has played a key role in enhancing local entrepreneurship, boosting economic independence, and creating job opportunities within the community.



Image: travelforimpact.com



Images: Facebook | Ntlafatso Glass Recycling



Shelter Botswana



Providing Education & Hope for Tomorrow.

BOTSWANA

Shelter Botswana delivers free Early Childhood Education to children from underprivileged families who cannot afford mainstream schooling. Catering to children aged 2 to 6, the preschool not only offers a strong educational foundation but also provides three nutritious meals daily to ensure their well-being. Additionally, transportation is provided, enabling consistent attendance and creating a supportive environment for learning and growth. This initiative is instrumental in giving children a brighter start to their educational journey, fostering hope for a better future.

Impact: Shelter Botswana has significantly enhanced early education accessibility, improving the health, learning, and overall well-being of children from disadvantaged backgrounds.



Image: Facebook | Shelter Botswana



Image: Pexels | Greta Hoffman



Harmony Between Humans & Wildlife.

HABU VILLAGE, BOTSWANA

For 35 years, Wild Entrust has championed the protection of endangered predators, resolved human-wildlife conflicts, and empowered communities to benefit sustainably from their environments. Their Community Coexistence Program in Habu Village fosters harmony between people and wildlife through initiatives like:

- Village Herd, which promotes wildlife-friendly beef
- Village Kids, which educates children on conservation
- Village Lights, providing solar lights to students, giving them extra study time after sunset
- Village Camp & Wildlife Area Patrols
- Village Enterprise and Governance, strengthening local governance, and boosting of tourism and craft-based livelihoods.

Sense of Africa, Botswana has proudly supported these efforts since 2022, working to ensure thriving ecosystems and empowered communities.

Impact: The Community Coexistence Program fosters peaceful human-wildlife interaction, empowers communities with sustainable income sources, and inspires young leaders through conservation education. Wildlife zones and tourism opportunities benefit the environment and the local economy.



Images: Facebook | Sense of Africa



Turning Bottle Caps into a Greener Future.

CAPE TOWN, SOUTH AFRICA

The African Home Community Project in Woodstock, Cape Town, transforms recycled bottle caps into handmade Green Seat Badges with support from TDM employees. This initiative nurtures relationships with artisans, ensuring fair wages and ethical practices while promoting environmental awareness. TDM employees have collected over 12,000 bottle caps for this effort.

Sense of Africa, South Africa, collaborates with African Home (100% B-BBEE) to produce travel-related items like Shweshwe kiddies backpacks and beaded wire picture frames. These creative projects empower communities, preserve cultural heritage, and drive sustainable practices.

Impact: The project has produced over 13,650 badges and engaged artisans in creating culturally significant travel items, providing fair wages and supporting local communities.



Images: TDM





Bishop Kameeta Kindergarten

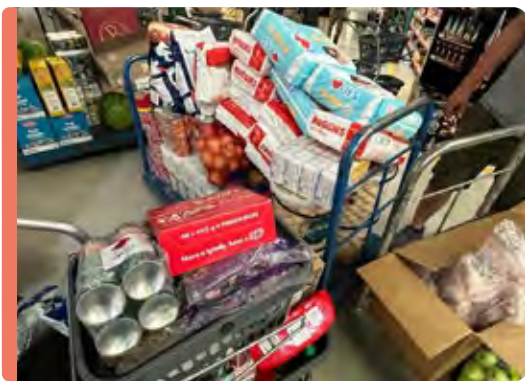


Empowering the Next Generation with Bishop Kameeta Kindergarten.

NAMIBIA

Since 2008, Sense of Africa, Namibia has been the primary supporter of Bishop Kameeta Kindergarten, aiding 80 children and three teachers. Monthly contributions cover food, utilities, and school materials, ensuring a safe environment for vulnerable children. The Kindergarten also provides medical care, counselling, and recreational activities, fostering dignity and trust. Over the past year, Sense of Africa contributed towards basic expenses. Support extends to voluntary donations, clothing drives, and interactive experiences like Christmas parties and excursions.

Impact: This initiative ensures a safe and nurturing environment for 80 children, providing them with essential needs like food, education, and medical care. It fosters emotional growth, enabling children to trust adults and feel respected. Recreational and social activities help enhance their holistic development.



Chamabondo Primary School



Shopping with a Purpose: Feeding Communities, Supporting Vendors.

CHINOTIMBA, ZIMBABWE

In the past year, Wild Horizons hosted 36 Road Scholar groups as part of the Shopping with a Purpose programme. Visitors explored Chinotimba's traditional market, purchasing groceries for donation to The Old Age Home, Rose of Charity Orphanage, and Chamabondo Primary School. Items included essentials like cooking oil, mealie meal, and sugar beans. This initiative embodies responsible tourism by supporting small-scale producers, enriching local vendors, and addressing food security for vulnerable communities.

Impact: This initiative provided groceries, benefiting vulnerable groups and promoting food security. It enriched local vendors financially while creating sustainable tourism-driven support for marginalised communities.



Wild Horizons Scholarship Programme.

ZIMBABWE

Wild Horizons is committed to transforming lives through education, sponsoring over 100 children annually. In September 2024, 45 more students were added to the scholarship programme. Scholarships are awarded based on academic merit and financial need, with contracts signed by parents and headmasters to ensure transparency and shared accountability. Additionally, guests are encouraged to contribute, with opportunities to sponsor a child for USD 150 annually, fostering lasting change through community-driven support.

Impact: Empowering over 100 children annually through education sponsorships and guest contributions.



Images: Wild Horizons



Strengthening Labour Relations at All Levels.

ZIMBABWE

Wild Horizons hosted comprehensive labour relations training sessions to promote a harmonious working environment in November. Participants included the Works Council, Disciplinary Committee, Workers' Committee, and Management. These sessions focused on roles, functions, and adherence to the NEC Tourism Code of Conduct.

Impact: This initiative fostered collaboration among various organisational groups. It also empowered participants with essential skills to contribute to a harmonious and effective work environment.



Image: Wild Horizons

Developing Local Talent for Biogas Initiatives.

HARARE, ZIMBABWE

Wild Horizons prioritises capacity building and development to empower communities. In April, the company sent 4 individuals from rural areas to Harare for specialised biogas digester installation training by Lanforce Energy. The training enhanced their technical skills and understanding of renewable energy, enabling them to actively contribute to sustainable community development and future biogas projects.

Impact: The training equipped the team with skills to install biogas digesters, promoting sustainable energy development.



Images: Wild Horizons



Supporting Women's Futures: A Partnership for Youth Empowerment in Victoria Falls.

VICTORIA FALLS, ZIMBABWE

Wild Horizons has partnered with UNICEF and Fairchance to create a groundbreaking initiative that empowers young women aged 18-25 through employment opportunities.

This program provides comprehensive training sessions, including:

- soft skills development,
- CV writing, and
- interview techniques.

Upon completing the training, participants are given the chance to secure internships with Wild Horizons.

In February 2024, the training was conducted at the Wild Horizons Head Office and extended to girls in the rural community of Victoria Falls. Following interviews in June 2024, 5 candidates were selected to join the Food and Beverages department, where they gained valuable experience in various roles.

This initiative aims to create positive social and economic change by investing in young women and contributing to the growth of local communities.



Image: Adobe Stock

Impact:

This initiative equips young women with essential skills and provides them with hands-on experience in hospitality, significantly improving their employability. It also promotes local community development, creating a positive social and economic ripple effect.



Images: Wild Horizons

New Classroom & Facilities for New Hope Waves Primary School.

ZAMBIA

In March 2024, Gate 1 Travel partnered with Wild Horizons to sponsor the construction of a classroom block and ablution facilities at New Hope Waves Primary School in Zambia.

This collaborative project involved representatives from Wild Horizons, school representative Auldrige Chibbwalu, and Macro World Construction, who planned the construction in phases.

Significant progress was achieved by April 2024, including the completion of the ring beam stage, roofing, and installation of doors and windows. On June 21, 2024, the Wild Horizons team officially handed over the completed facilities.

The project included:

- classrooms equipped with teaching tools,
- improved hygiene standards with tiled toilets,

- enhanced security through fencing,
- and access to clean water via a new borehole and water tank.

This initiative has transformed the school, creating a nurturing learning environment and providing students with the resources for a promising future.

BEFORE



DURING



AFTER



Images: Wild Horizons



Oncology Room Redesign: Bringing Comfort & Joy.

JOHANNESBURG, SOUTH AFRICA

TTS partnered with the Reach for a Dream Foundation to redesign two rooms in the Oncology Department at Charlotte Maxeke Hospital. The redesigned procedure room now offers a lively and comforting space, while the counselling room provides a supportive environment for sensitive discussions. This initiative aims to improve the hospital experience for children facing severe illnesses, offering them comfort and stimulation during their stay.

Impact: The redesigned oncology rooms create a comforting and uplifting environment, enhancing the well-being of children facing severe illnesses.



Image: Facebook | Reach for a Dream



Quality Education.

JOHANNESBURG, SOUTH AFRICA

Through a partnership with the TAG Foundation, four scholars from Johannesburg have received bursaries to cover school and boarding fees at prestigious institutions. These funds enable three Grade 11 girls at Parktown High School for Girls and one Grade 12 boy at King Edward VII School to focus on their education and achieve academic excellence, fostering a brighter future for the students and their community.

Impact: By covering school and boarding fees, it alleviates financial burdens on families and empowers students to focus on academic success, contributing to long-term community upliftment.

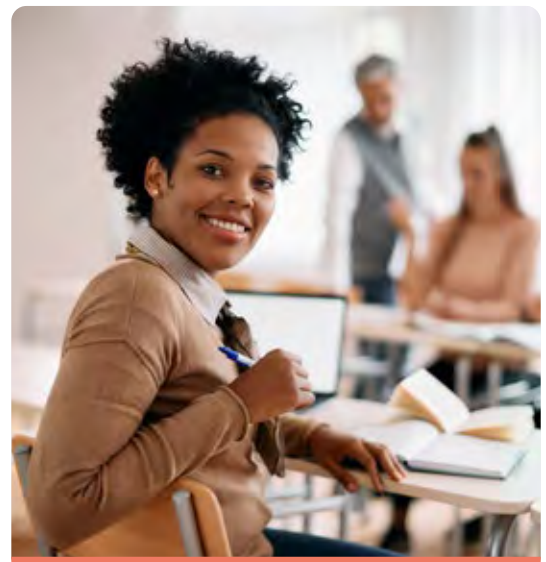
Images: Facebook



Building Opportunities at Hamilton School in Ladysmith.

LADYSMITH, SOUTH AFRICA

A donation to Hamilton School in Ladysmith has funded an adult learning project that takes place on weekends. This initiative offers members of the community who didn't complete their schooling a chance to further their education by fostering quality education and providing a safe, supportive learning environment. This initiative aligns with the school's mission of preparing individuals for life and realising their potential.



Images: Adobe Stock

Tumshangilieni Mtoto Children's School & Home.

NAIROBI, KENYA

Tumshangilieni Mtoto, a charitable institution in Kibagare Slums, Nairobi, cares for over 250 children from vulnerable backgrounds, providing education and nurturing their talents. Sense of Africa, East Africa, contributed financially towards educating these children, supporting the home's mission to empower young people and help them achieve their dreams. The project reflects the vision of founder Ann Wanjugu, inspiring hope and fostering sustainable development in the community.

Impact: Tumshangilieni Mtoto provides education and nurturing support for over 250 children from vulnerable backgrounds, focusing on developing their talents and preparing them for tertiary education. This initiative enables these children to escape challenging environments, offering them opportunities for a brighter future and sustainable growth within their community.



Images: Facebook | Tumshangilieni Mtoto Children's School and Home

Partnership for the Goals.

GAUTENG, SOUTH AFRICA

Our commitment to enterprise and supplier development is reflected in initiatives supporting ECSTRA Elite Chauffeur Services, Air Students, and local transfer providers Chumile Holdings and Thoblicias Shuttle and Tours. Over the past three years, we have partnered with ECSTRA, exploring ways to grow their business with our MICE further to grow their business with our MICE division further. Through an enterprise development programme, we facilitated travel arrangements for Air Students. Additionally, interest-free loans were provided to Chumile Holdings and Thoblicias Shuttle and Tours to support their transport services. These efforts drive sustainable business growth and create long-term opportunities for local enterprises.

Impact: These initiatives drive sustainable business growth by providing financial support, resources, and opportunities for local enterprises, enabling them to expand their services and contribute to economic development. They cultivate long-term partnerships, empowering businesses to achieve stability and success.



Images: Chumile Travel & Tours, Pexels | Jason Toevs



BASADI REYAPELE



“Basadi Reyapele”: Sewing a Better Future in Diepsloot.

GAUTENG, SOUTH AFRICA

Basadi Reyapele (Women Forward) was established to empower women in Diepsloot who faced unemployment and economic hardship. Originally employed by I Love Diepsloot to upcycle materials into corporate gifts, the women started their own business after its closure.

In 2019, aha Hotels & Lodges supported this initiative by providing a container, equipment, and sustainable projects like repurposing used hotel linen into laundry bags. During the COVID-19 pandemic, they expanded to packaging amenities and sewing items such as sewing cushions, throws, and other essential items for aha properties. This initiative supports women’s empowerment and sustainability in the local community.

Impact: The Basadi Reyapele initiative has empowered unemployed women in Diepsloot by providing employment opportunities and skills development. It promotes sustainability by upcycling waste materials into usable products for the hospitality industry. This initiative has strengthened local economic growth and provided long-term benefits to the community.



NOVUTHELA UPHOLSTERY (PTY) LTD



Empowering Local Talent: Novuthela Upholstery’s Journey of Growth with aha Hotels and Lodges.

KWAZULU-NATAL, SOUTH AFRICA

Novuthela Upholstery (Pty) Ltd, led by Thokozani Nkabinde in Bergville, faced challenges due to outdated equipment. Recognising his craftsmanship, aha Hotels & Lodges included Novuthela Upholstery in their ESD programme, providing modern tools like upholstery machines, an overlocker, and an air compressor. This support enhanced efficiency and enabled Thokozani to secure new contracts, including refurbishments for Kopanong Hotel and Alpine Heath Resort. The initiative has also created local job opportunities, showcasing how empowering small businesses contributes to economic growth and community development.

Impact: The support from aha Hotels & Lodges has enabled Novuthela Upholstery to improve efficiency, secure new contracts, and create job opportunities in the local community. By empowering this small business, the initiative has fostered local economic growth and provided high-quality services to hospitality establishments.



Images: aha Hotels & Lodges

Image: Unsplash | J Williams

aha Hotels & Nourish: Feeding Hope for Kids.

SOUTH AFRICA

AHA Hotel & Lodges has provided invaluable financial support throughout 2024, with all funds raised directly benefiting Nourish Eco Village Sigagule and its projects in rural South Africa.

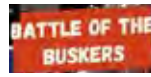
Through the Green Kids aftercare programme, Nourish Eco Village provides 4,400 nutritious meals each month to 140 children, teachers, and staff, ensuring they are well-nourished and able to focus on their daily activities. The integration of produce from the on-site farm also fosters sustainability and hands-on learning for the children.

At RISE Educare, 60 children receive essential early childhood education, with support extending to six surrounding creches. The financial aid ensures that over 60 children at RISE Educare, as well as many others at partner facilities, receive nutritious meals daily, combating food insecurity and supporting their health and development.

Impact: This funding has had a profound impact, ensuring children are nourished and ready to learn, while also promoting sustainable practices and community growth.



Images: aha & Nourish Eco Village



Supporting Local Artists: Battle of the Bands and Battle of the Buskers.

V&A WATERFRONT, CAPE TOWN, SOUTH AFRICA

The annual Battle of the Bands at Quay 4 Restaurant & Tavern and the Battle of the Buskers at Ferryman's Irish Tavern provide incredible platforms for local musicians to showcase their talent at the V&A Waterfront. Both competitions run over six months and offer participants full professional support, including sound engineers, stages, and all necessary equipment, courtesy of Tourvest Restaurants & Taverns.

The Battle of the Bands allows aspiring bands to perform in a competitive environment. The winner receives a cash prize, musical equipment, and vouchers to help advance their music careers. Similarly, the Battle of the Buskers provides independent musicians across the Western Cape with a valuable opportunity to gain exposure at a popular venue. The contest winner takes home a cash prize, along with musical equipment and vouchers.



Impact:

By offering these competitions, Tourvest Restaurants & Taverns not only supports emerging talent but also provides musicians with the opportunity to expand their fan base and take their musical careers to new heights.



Image: Adobe Stock

Images: Quay Four & Ferryman's Irish Tavern

Strength in Community: Quay Four's Ongoing Support for The Haven.

GREEN POINT, WESTERN CAPE, SOUTH AFRICA

Quay Four Restaurant supports The Haven Night Shelter Welfare Organisation by providing daily meals to 96 homeless individuals at the Napier Street shelter in Green Point. The Haven offers temporary shelter, physical care, and rehabilitation services to adults committed to reintegration. The collaboration goes beyond providing food—supporting a greater mission of restoring dignity, reuniting families, and offering a better future.

Impact: Through this initiative, Quay 4 actively contributes to the shelter's goal of helping individuals transition from homelessness to stable living conditions.



Images: The Haven Night Shelter WO Cape Town | Facebook

Making an Impact: Ongoing Contributions for Vulnerable Families.

SOUTH AFRICA

Black Marlin and Bertha's Restaurant continue to support Living Hope, a dedicated NGO in Capri that serves over 100,000 people annually. The restaurants provided 67 blankets, ensuring warmth for those in need. Additionally, through structured feeding schemes, they have consistently delivered meals to vulnerable individuals and child-headed households. Between October and January, their contributions provided thousands of meals, averaging between 22 and 43 beneficiaries per session. The initiative extends to Christmas hampers, benefiting 35 households in communities such as Capricorn, Ocean View, Overcome Heights, and Red Hill.

Impact: Through ongoing food contributions, this initiative has provided thousands of meals, ensuring food security and supporting family strengthening programmes. This partnership highlights the power of corporate social responsibility in making a lasting difference in the lives of those most in need.



Images: Living Hope | Facebook

Images: Adobe Stock



Helping Hand for Living Hope and Nomathamsanqa Educare.

SOUTH AFRICA

In response to the challenges faced by families in informal settlements during heavy rains and flooding, Tourvest Restaurants & Taverns donated 1,150 plastic containers to help store and protect essential belongings. This initiative was part of a broader relief effort by Living Hope, which distributed over 2,000 flood relief parcels to affected families, providing much-needed aid during difficult times.

Additionally, Cattle Baron staff visited Nomathamsanqa Educare in Addo, treating 93 children to a delightful meal of Oros and their popular chicken strips and chips. The children enjoyed a moment of happiness and nourishment, reinforcing Tourvest’s commitment to supporting both immediate needs and long-term community well-being.

Impact: This initiative had a meaningful impact by providing essential relief to families affected by flooding and fostering community support and well-being. Through practical aid and moments of joy for children, Tourvest Restaurants & Taverns demonstrated a commitment to humanitarian efforts and social responsibility.



Image: www.livinghope.co.za



Image: Cattle Baron



School Shoe Donation for Learners.

SOUTH AFRICA

On 31 October 2023, Tourvest Restaurants & Taverns donated school shoes to the learners of Xumabakwe Primary School, ensuring they could walk to and from school comfortably while proudly wearing their uniforms. This generous contribution brought joy to the children, boosting their confidence and reinforcing a positive attitude towards education.

Impact: By addressing a key challenge many students face, this initiative highlights Tourvest’s commitment to community development and empowering young learners. Providing essential school supplies enhances the learning experience and encourages children to focus on their studies with pride and determination.



Images: Tourvest Restaurants & Taverns

Heritage Education Schools Outreach Programme.

SOUTH AFRICA

The Heritage Education Schools Outreach Programme (HESOP) continued its mission of enriching young learners with knowledge about their heritage and culture. This annual initiative engages students in research and essay competitions at the District/Provincial level, culminating in a national event. Miss Matanato facilitated the participation of learners from across South Africa, offering them the chance to experience Tsitsikamma National Park. Alongside the competition, they attended an educational programme to deepen their understanding of cultural heritage.

Cattle Baron generously provided breakfast, lunch, and dinner throughout the week for the 70 learners including packed meals for the trip, ensuring the learners were well-nourished for their journey.

Impact: Cattle Baron's support, through nutritious meals throughout the week, ensured that the learners had the energy to fully engage in the programme.



Images: Heritage Education Schools Outreach Programme | Facebook



Itshekeng Career Expo: Guiding the Youth Towards a Bright Future.

SOUTH AFRICA

The Itshekeng Career Expo, held on 6-7 August 2024 at Giant Stadium in Soshanguve, Johannesburg, aimed to provide career guidance, educational support, and empowerment to disadvantaged communities. The event brought together various exhibitors from various industries to engage with students, graduates, and learners, offering valuable career insights. Tourvest Destination Management and Tourvest Travel Services contributed financially towards the venue, ensuring the event's success. The expo also supported small entrepreneurs and local businesses, strengthening community development and receiving positive feedback from exhibitors and attendees for its significant impact.

Impact: The Itshekeng Career Expo provided crucial career guidance and opportunities to disadvantaged communities, empowering students and graduates with industry insights. Tourvest Destination Management and Tourvest Travel Services played a key role in making the event possible through their donation towards the venue, ensuring accessibility for attendees and contributing to the success of this impactful initiative.



Images: TDM

The image features large, stylized outline numbers '05' at the top. The '0' is blue and the '5' is red. The background is a light blue gradient with a faint, repeating pattern of coral or sea anemone-like structures.

Environmental Initiatives

Tourvest is committed to promoting the achievement of the United Nations Sustainable Development Goals (UNSDG 2030), net zero emissions by 2050, and resilience. In support of this commitment, we aim to green all our operations and create a sustainable environment.

Tourvest cannot achieve these goals alone; strong collaboration is essential. We work closely with key stakeholders, including the business community, youth, women, people with disabilities, civil society, our customers, academia, research institutions, and government entities operating in the tourism industry.

At Tourvest, we continuously strive to develop strategies and plans focusing on environmental mitigation within our value chain. Every financial year, Tourvest seeks to implement sound environmental initiatives.



Seed Bombs: A Simple Answer to Environmental Challenges.

TARANGIRE NATIONAL PARK AND THE NGORONGORO HIGHLANDS, TANZANIA

Desertification poses a growing threat to ecosystems between Tarangire National Park and the Ngorongoro Highlands. The seed bomb initiative offers an eco-friendly solution, using biodegradable clay and organic fertiliser to plant trees efficiently and sustainably. This method reduces labour and costs and eliminates the need for plastic used in traditional nurseries. Newly planted trees enhance soil quality, offset carbon emissions, and support local wildlife, creating a greener, more resilient environment for future generations.

Impact: The project combats desertification by restoring vegetation, reducing soil erosion, and preventing flooding during the rainy season. It improves air quality through carbon capture, enhances soil health, and provides habitats for local fauna, contributing to a sustainable and balanced ecosystem.



Image: www.andbeyond.com



Images: Lemala



Guardians of Nature: A Tribute to Pirate and Ongoing Efforts.

PILANESBERG GAME RESERVE, SOUTH AFRICA

The Endangered Wildlife Trust's Conservation Canine Project trains and deploys dogs to protect wildlife across South Africa's parks. Canines like Pirate, a certified tracking dog stationed at Pilanesberg Game Reserve, play a vital role in combating poaching and safeguarding species like rhinos and elephants. Despite Pirate's passing, the project continues with K9 units Remi and Kisha. TDM has contributed financially towards these efforts, underscoring a commitment to protecting biodiversity.

The Humpback Dolphin Project also advances research on this endangered species, addressing knowledge gaps to ensure their conservation.

Impact: This initiative safeguards endangered species like rhinos and elephants. The Humpback Dolphin project focuses on critical research to understand population dynamics and threats to ensure their survival.



Image: Facebook | Endangered Wildlife Trust



Image: TDM





Safeguarding Rhinos: A Collaborative Effort.

KRUGER NATIONAL PARK, SOUTH AFRICA

The SANParks Honorary Rangers, the official SANParks volunteer organisation, play a critical role in combating rhino poaching nationwide. They deploy essential resources like helicopter fuel, tracker dogs, GPS collars, and patrol equipment to priority areas, including the Kruger K9 operation. With donations from TDM through Green Seat (2012–2023), the project has enhanced rapid response capabilities and protected South Africa’s endangered rhino population.

Impact:

This initiative provides essential resources to combat rhino poaching across South Africa. The funds support aerial surveillance, canine tracking units, and training, enabling quick deployment and effective operations. These efforts have significantly enhanced wildlife protection and contributed to preserving endangered rhino populations.



Images: Facebook | SANParks Honorary Rangers



Image: Adobe Stock

Empowering People, Protecting the Planet.

SOUTH AFRICA

The Joinery, a South African brand focused on sustainability, collaborates with Sense of Africa, South Africa, to create multipurpose travel items such as journals and wallets for international clients. Crafted from FutureFelt™, made by repurposing recycled plastic bottles, these products promote sustainability and reduce waste. This partnership not only enhances environmental conservation but also supports local employment and ethical practices. Together, we're making a positive impact on people and the planet.

Impact: This initiative reduces plastic waste by transforming recycled plastic bottles into FutureFelt™ products, contributing to environmental sustainability. It also creates meaningful employment opportunities, supporting local communities while promoting ethical business practices.



Image: Pexels | Solomon Onyeagoro



Image: TDM

Transforming Lives with Renewable Energy.

MONDE, CHIDOBE & SIZINDA COMMUNITIES, ZIMBABWE

With support from Barbara and Dennis Marks and Africa Inscribed, Wild Horizons installed four biogas digesters in Monde, Chidobe, and Sizinda communities. Each digester is filled with 4,000 litres of water and 2,000 kilograms of cow dung, producing gas to fuel two-plate stoves after 30 days. Beneficiaries ensure gas supply by adding 80 litres of water and 40 kilograms of cow dung daily. This innovative project reduces deforestation, combats global warming, and promotes sustainable cooking. 24 more digesters will be installed in September, empowering rural communities with renewable energy solutions.

Impact: This project significantly reduces deforestation by providing clean, renewable cooking energy and reducing reliance on firewood. It promotes environmental sustainability by curbing global warming while empowering rural communities through training and active participation in installation.



Images: Wild Horizons



Innovative Energy Brings Hope to Rural Areas.

VICTORIA FALLS RURAL COMMUNITY, ZIMBABWE

On 22 March 2024, Wild Horizons and the Victoria Falls rural community celebrated four new biogas digesters. This sustainable energy project reduces deforestation, empowers women by easing firewood collection, and boosts socio-economic development, promising lasting environmental and social benefits.

Impact: The biogas digesters reduce deforestation by providing an eco-friendly alternative to traditional firewood, combating a critical environmental issue.



Images: Wild Horizons



Protecting Nature's Clean-up Crew.

VICTORIA FALLS, ZIMBABWE

Wild Horizons partnered with the Victoria Falls Wildlife Trust (VFWT) to commemorate World Vulture Day, involving over 50 students from local schools. The children participated in quizzes, speeches, and poetry that highlighted the importance of vultures in maintaining ecological balance. Their enthusiasm and knowledge underscored the significance of educating youth in conservation. The event successfully inspired young minds to recognise and support the vital role vultures play in ecosystems.

Impact: The event fostered environmental awareness among young learners, empowering them to advocate for vulture conservation.



Images: Wild Horizons

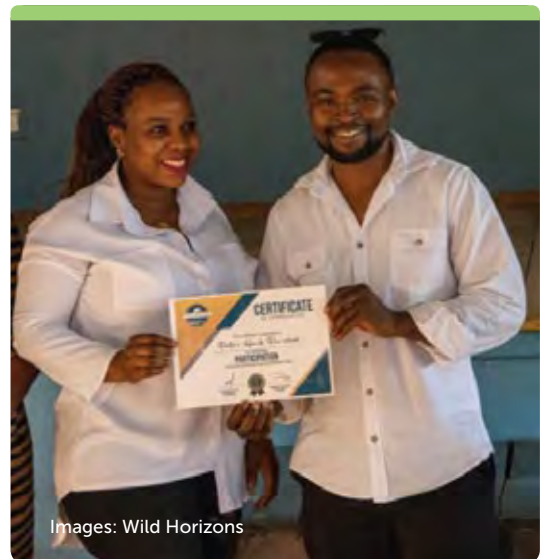


Schools Environmental Awards.

VICTORIA FALLS, ZIMBABWE

Wild Horizons and Pristine Society launched an awards programme recognizing schools for environmental dedication. 36 schools showcased sustainability projects, with top achievers honored in September 2023. The initiative celebrates youth's role in conservation and highlights education's power in fostering a greener future.

Impact: The awards programme inspires youth to embrace environmental responsibility and engage in conservation efforts.



Images: Wild Horizons

Wild Horizons Leads the Charge in Environmental Care.

VICTORIA FALLS, ZIMBABWE

Wild Horizons continues its commitment to environmental preservation through monthly clean-up campaigns, held on the first Friday of each month. These efforts focus on reducing plastic and paper waste, which threatens wildlife.

Thanks to educational campaigns led by the Pristine Victoria Falls Society, the quantity of waste collected has decreased significantly.

The initiative plays a key role in safeguarding local habitats and protecting wildlife by promoting responsible waste

management. Cleaning sites include Masuwe Bridge, Lookout Café surroundings, and the Jetty site.

Impact:

The clean-up campaigns have significantly reduced the volume of waste in key areas, helping to prevent the ingestion of harmful materials by wildlife. The initiative has raised awareness about the importance of responsible waste disposal, contributing to the long-term preservation of the local environment.



Images: Wild Horizons



Image: Adobe Stock



FARM 215



Planting Roots for a Greener Future.

WESTERN CAPE, SOUTH AFRICA

The Trees for Tourism initiative, part of the South African Reforestation Trust, enables tourists and tourism companies to offset their environmental footprint. Indigenous trees are planted in degraded areas of the Western Cape to restore forests, combat climate change, and protect biodiversity.

Operators like Platbos Conservation Trust, Farm 215, Grootvadersbosch Conservancy, and Klein River Cheese Farm have overseen site preparation, planting, and maintenance for a decade. With a generous donation from TDM, over 4,042 trees have been planted, creating thriving ecosystems and ensuring sustainable tourism practices.

Impact:

The initiative restores degraded land by planting indigenous trees, creating pristine forest ecosystems that capture carbon and support biodiversity. This project offsets the tourism industry's ecological footprint, ensuring a sustainable legacy for future generations.



Images: TDM



Sustainable Waste Management in Action.

VICTORIA FALLS, ZIMBABWE

Wild Horizons has bolstered community efforts by donating a 6m-long, 3,5m-high, and 2m-wide waste container to the Pristine Victoria Falls Society. This durable container at the COMESA Market addresses persistent waste challenges along Lawley Road by preventing litter from being scattered by baboons.

Impact: This intervention improves the area's cleanliness and reduces potential health risks caused by unmanaged waste, supporting sustainable and hygienic community practices.



Images: Wild Horizons



Reducing Environmental Impact Through Digital Solutions.

SOUTH AFRICA

Tourvest Financial Services (TFS) is taking steps to promote sustainable use of terrestrial ecosystems and combat biodiversity loss. TFS is introducing Electronic Signing Pads at all teller points, enabling clients to sign invoices electronically and receive copies via email. This initiative will significantly reduce branch paper usage, lowering printing costs and contributing to forest conservation. Additionally, TFS plans to implement a document storage and retrieval system to minimise physical storage and duplication of documents.

Impact: This initiative supports environmental sustainability by reducing reliance on paper, conserving resources, and contributing to forest preservation.



Image: TFS



Eco-Felt Innovations for a Sustainable Future.

CAPE TOWN, SOUTH AFRICA

Sizzle Concepts, led by Sylvia Sutherland, crafts stunning eco-felt bags from recycled plastic, promoting sustainability since 2005. Initially partnering with a teenage outreach programme, Sylvia has developed various unique, purpose-driven projects. Sylvia prioritises collaborating with companies that uphold regenerative and sustainable business practices, aligning with her core values. Her commitment ensures she supports environmental well-being, empowers communities, and maintains ethical and responsible sourcing throughout her supply chain.

In collaboration with Tourvest Destination Retail Team since October 2023, 2 distinctive bag designs inspired by the African penguin and Kirstenbosch's botanical heritage were created over a 10 months. The launch debuted in December 2024, with the African penguin design showcased at Boulders and the Aquarium, while the botanical range is showcased at Kirstenbosch. The botanical collection features private label artwork and a broader selection of indigenous botanical imagery.



Images: TDR



Impact:

The initiative fosters environmental sustainability by transforming recycled plastic into eco-friendly products while empowering local communities through ethical business practices.



Down to the Wire.

LIMPOPO, SOUTH AFRICA

Down to the Wire, launched in June 2023 in Hoedspruit, transforms deadly poaching snares into handcrafted jewellery and accessories, promoting wildlife conservation. Each piece, including bangles, rings, earrings, keychains, and bookmarks, symbolises hope and raises awareness about the silent threat of snaring.

Products are sold in shops within the Kruger National Park and the Mpumalanga region, with proceeds supporting wildlife veterinarians in treating and rehabilitating injured animals.

Customers can make a difference by purchasing these unique items, contributing to a meaningful cause while enjoying beautiful craftsmanship.

Impact: The initiative raises awareness about wildlife conservation while funding veterinary care for injured animals, effectively turning poaching threats into opportunities for positive change.



Images: www.down2thewire.org



From Waste to Worth: The Uzwelo Bags Project.

KRUGER NATIONAL PARK, SOUTH AFRICA

The Uzwelo Bags initiative converts tonnes of textile waste and PET bottles into unique South African shopper bags, empowering sewing teams from underprivileged backgrounds. These teams gain the opportunity to earn a living, support their families, fund education, and uplift their communities with dignity and long-term sustainability.

Uzwelo Bags encourages individuals to take action and drive positive change for South Africa and the environment. Launched in 2022, the recycled shopper bags are available in the "Help the Big 5 Thrive" shops within Kruger National Park. They reflect a commitment to creating a sustainable future and inspire others to embrace environmental responsibility.

Impact:

The initiative empowers underprivileged communities by providing job opportunities and promoting environmental sustainability through the repurposing of waste materials.



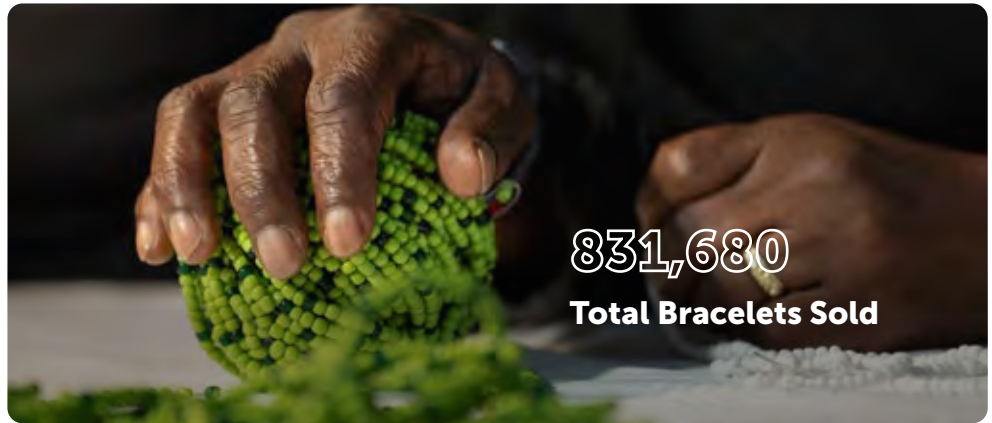
Images: Facebook | Uzwelo Bags

Job Creation and Charity: The Relate Trust and Tourvest Journey.

SOUTH AFRICA

Since 2011, Tourvest has partnered with Relate Trust, a 100% not-for-profit social enterprise, to create meaningful change in communities. Together, they have sold over 831,680 bracelets, raising money for over 110 charities globally. They support causes such as feeding orphans, educating children, and providing clean water to villages. Their commitment extends to empowering individuals through job creation and skills training, benefiting 400 senior citizens in townships with meaningful earning opportunities.

In 2025, the successful campaign of EWT Rhino led to an 84% increase in Rhino bracelet sales and a significant boost in K9 Rangers of 4,175 units ordered, reflecting the growing impact of their initiatives. Their total impact has nurtured future entrepreneurs and fostering sustainable development.



Causes supported:

- Goodbye Malaria
- Ikamva Labantu (Leave a legacy bracelet)
- Elephants Alive
- EWT Wild dog
- EWT Rhino

Impact:
The initiative empowers underprivileged individuals while raising substantial funds for global charities, creating jobs, and fostering economic growth in local communities.



Images: Relate Bracelets Facebook & TDR



Strengthening the Fisheries Industry with Local Partnerships.

WESTERN CAPE, SOUTH AFRICA

Tourvest Restaurants & Taverns has partnered with Only Fishers Secondary Co-operative to support the development of sustainable fishing practices and community growth. Located across the Western Cape's Garden Route, Overberg, and Cape Metro, the cooperative represents 16 members and 610 local fishers. To assist in meeting industry standards, Tourvest Restaurants & Taverns has provided essential infrastructure, including:

- Office partitioning,
- Drainage systems,
- Floor and wall painting to meet HACCP standards,
- Office furniture procurement,
- Industrial-scale facilities,

- Insulated tubs (10 units),
- Processing and cold room set-up,
- Construction of a processing upper deck,
- Oyster holder tanks, and
- A forklift

Impact: This collaboration aims to create job opportunities and strengthen the fisheries value chain, ensuring local sustainability and compliance. Through this partnership, Tourvest Restaurants & Taverns sources seafood products locally, supporting environmental and community development.



Photo: Christian Adams and Anthony Stofberg | Jackie Sunde



Images: www.news.mongabay.com



Strengthening Conservation Efforts with SANParks Honorary Rangers.

SOUTH AFRICA

SANParks Honorary Rangers have played a vital role in conservation for over a century. They officially formed in 1964 and grew into a dedicated network of over 2000 volunteers across 31 regions. Their work includes habitat restoration, counter-poaching awareness, and public education.

Tourvest Restaurants & Taverns is proud to support their efforts by offering discounted rates for meetings, sponsoring tea breaks, and special discounts for duty rangers. Tourvest Restaurants &

Taverns also sponsors fundraising events, offering venues and refreshments to ensure continued conservation success.

Impact: This partnership reflects Tourvest Restaurants & Taverns' commitment to preserving South Africa's natural heritage and supporting those who dedicate their time to protecting it.



Image: Adobe Stock



Image: SANParks Honorary Rangers | Facebook



Image: www.sanparksvolunteers.org

065

Entrepreneurship Initiatives

Tourvest has undertaken and committed to developing new business enterprises through its value chain to benefit youth, women, and people with disabilities residing within our host communities.

Our entrepreneurship development initiatives will consistently be implemented in line with the principles of Enterprise and Supplier Development, as outlined in the Broad-Based Black Economic Empowerment Scorecard.

Entrepreneurship Development focuses on assisting up-and-coming entrepreneurs in enhancing their existing skills and abilities to become more proficient in managing their businesses. Our aim is not merely to drive compliance but to implement meaningful and impactful projects to society. We strive to create enterprises that generate sustainable employment opportunities for the poor within our host communities.





The Journey of Moagi NP Solutions.

GAUTENG, SOUTH AFRICA

In 2021, TTS took a bold step in supporting local enterprise development by partnering with Peter Ngwako Moagi to establish and grow NP Solutions. This initiative, aimed at enhancing operational capacity, began with the transfer of six motor vehicles and the provision of a start-up loan. To further solidify its foundation, TTS provided ongoing management support and mentorship, helping to establish a roadmap for sustainable growth.

By 2022, NP Solutions achieved significant milestones, graduating to a recognised supplier for TTS. Contributions included a one-time grant, monthly support, and professional services. Additionally, the transfer of six vehicles further bolstered its operational capabilities.

In 2023, the business experienced further expansion with the acquisition of a Toyota Quantum minibus, and increased staff from one to three employees. This growth highlights the success of TTS's strategic partnership, which continues to drive local economic development and strengthen community impact.

Through this initiative, TTS has demonstrated its unwavering commitment to empowering small businesses and fostering sustainable success.

Impact: Through sustained financial support, mentorship, and strategic investments, NP Solutions transitioned from a startup to a recognised supplier, creating jobs and fostering local enterprise growth. The initiative empowered Moagi's business and contributed to the surrounding community's economic development by providing consistent services and employment opportunities.



Images: TTS



Image: www.businesslive.co.za



Partnership for the Goals: Developing Coding Skills and Small Businesses for Lasting Impact.

SOUTH AFRICA

Aurik Enterprise Development

Tourvest Travel Services (TTS) has partnered with Aurik Enterprise Development to empower qualifying small enterprises (QSEs), driving growth and sustainable business success. A significant contribution has been invested in enterprise development initiatives for Travelit. A further grant was provided to We Think Code for a three-year programme to train entry-level coding talent, ensuring future opportunities for learners in the tech industry.

BYOD Technologies (Pty) Ltd

Tourvest Travel Services (TTS) continues to support innovation and technological advancement through its partnership with BYOD Technologies (Pty) Ltd, a dynamic company specialising in IT solutions, software development, application customisation, and system integration. During the 2023/2024 financial year, TTS made an investment to bolster the company's growth and operational capabilities, further fostering innovation and local enterprise development.

Impact: These initiatives empower small enterprises to achieve sustainable growth and long-term success. The coding programme creates a talent pipeline, equipping young learners with essential digital skills to secure career opportunities and contribute to the tech industry.





From Cleaner to Entrepreneur: Nomsa's Inspiring Journey.

KRUGER NATIONAL PARK, SOUTH AFRICA

In the heart of the Kruger National Park, Nomsa Sithole's story exemplifies resilience and determination. As the owner of Ngomthi Firewood, Sithole has transformed her life from humble beginnings in Majeje, Phalaborwa, to running a thriving business supplying firewood to camps and shops within the park. Starting her entrepreneurial journey in 2017 with a second-hand bakkie, she now operates two trucks, employs 20 people and inspires countless others.

Nomsa's path was far from smooth. Having dropped out of school after her father's tragic murder, she worked as a cleaner and housekeeper, gradually climbing the ranks. Her entrepreneurial spirit was ignited during her time at Marties Refrigerators, where she honed her work ethic and shared her aspirations of starting her own business. Supported by her employer and a local benefactor, she secured permits, packaging supplies, and a vehicle to launch her firewood company.

Her resilience was tested again in 2022 when a robbery and fire destroyed her home and business inventory. Despite this setback, Sithole rebuilt her life with the support of Tourvest, which provided a second-hand truck to revive her business. Tourvest's economic development programme also gifted her a new truck, further bolstering her capacity.

Tourvest's former Chief Operating Officer, Judi Nwokedi, had a profound effect on Sithole's journey. Beyond facilitating tangible support, Nwokedi recognised Sithole's strength and perseverance, describing her as a cornerstone of her community. Before handing her the keys to the new truck, Nwokedi proudly declared,

"Often it is the women who are the hewers of wood and drawers of water. We are proud that Nomsa is no longer the hewer of wood and drawer of water but that she's part of the ownership of production".

Her words underscored the empowerment and economic independence that Sithole's journey represents.

Sithole's daughter, Albertina, now works in the business while pursuing her dream of becoming an accountant, inspired by her mother's journey. Through Ngomthi Firewood, Sithole supports not only her family but also provides livelihoods for 20 families in her community.

Nomsa's remarkable transformation underscores the power of hard work, community support, and unwavering determination, proving that dreams can come true.



Photographer: Andy Tinker | The Sunday Times Newspaper



Images: Adobe Stock

Empowering Local Artisans through Sustainable Growth.

SOUTH AFRICA & ZAMBIA

Elth Art Ceramic (PTY) Ltd, known for its hand-painted tableware, has received funding to enhance production. Grants provided in August 2023 and August 2024 have supported equipment upgrades and expansion. This investment has created jobs and increased local market reach, with collections now available at premium retail locations, including Indaba Lifestyle, O.R. Tambo Airport, Out of Africa Sandton, The Royal Livingstone Zambia, and The Palace Collection in Sun City.

Impact: The funding provided has enabled Elth Art Ceramic to expand its manufacturing capacity, leading to job creation opportunities for skilled ceramic artists.



Images: Elth Art Ceramic | Facebook

The Ukuthunga Handmade: Queens of Crochet.

MPUMALANGA, SOUTH AFRICA

Ukuthunga Handmade is a non-profit organisation empowering 60 unemployed women in rural communities near Kruger National Park through skills development and income generation. Initially starting with just five women, the initiative has grown significantly, providing sustainable livelihoods through handcrafted crochet toys. The women meet weekly in community shelters to share their work, fostering a spirit of entrepreneurship, purpose, and pride. Their craftsmanship has gained recognition, including a feature in the Sunday Times in December 2023.

Impact: This funding ensures ongoing training, material supply, and market expansion. Through this programme, Ukuthunga Handmade continues to uplift local women, preserving traditional crafts while promoting economic independence.



Images: www.ukuthunga.com



Kgotso's Pride: Naleding Projects and Services.

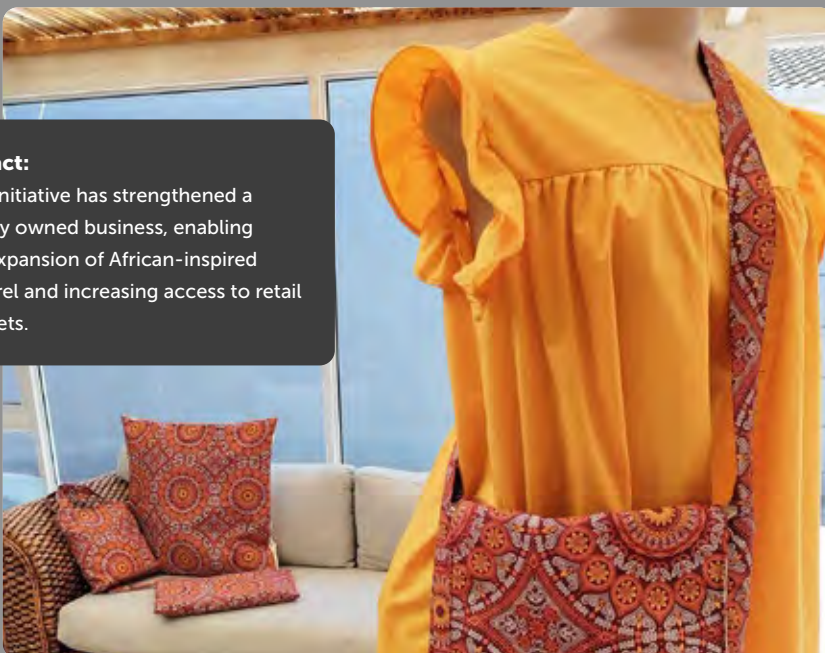
CAPE TOWN, SOUTH AFRICA

Naleding Projects and Services trading as Kgotso's Pride, founded in 2022, identified a market need for uniquely African-inspired ladies' and children's clothing. In collaboration with the Tourvest Travel Retail Cape Town team, Kgotso developed a children's range featuring dashiki-inspired garments, including ruched dresses, skirts, boy shorts, dungarees, and applique t-shirts. The brand underwent a redesign, introducing sew-on labels and swing tickets, with the first orders delivered in September 2023.

Tourvest Travel Retail introduced the collection to four stores, with strong performance leading to replenishment orders in 2024. By mid-2024, the range expanded to include African wax print kimonos, jackets, linen blend pants, and printed kimonos, accompanied by additional orders.

Investments in industrial-grade equipment have significantly enhanced production efficiency, ensuring sustained business growth. Tourvest Travel Retail supplied Kgotso's Pride with:

- 1 x Industrial Embroidery Machine
- Industrial Sewing Machines
- Industrial Overlocker
- Industrial Cover Seam
- Press-Stud Machine
- Industrial Iron
- Fabric Cutter
- 4 x Mannequins
- Fabric Procurement sourced in South Africa and the African Continent



Impact:
This initiative has strengthened a locally owned business, enabling the expansion of African-inspired apparel and increasing access to retail markets.

Images: Kgotso's Pride Facebook

Love Art Ceramics: Celebrating African Heritage Through Art.

ESTOURT, KWAZULU-NATAL, SOUTH AFRICA

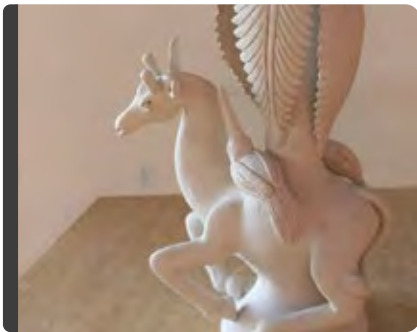
Love Art Ceramics is a family-run studio specialising in sculptural and richly decorated ceramic vessels. Founded in July 2022 by Lungelo Hadebe, his mother Zinhle, and her sister Jabu Nene, the studio captures the essence of untamed Africa through its artwork. Situated in the Drakensberg area of Estcourt, the family is dedicated to preserving African culture through their passion for art and painting.

Tourvest Destination Retail partnered with Love Art Ceramics in May 2023, placing initial orders for Indaba Lifestyle O.R. Tambo and Out of Africa Sandton. Grants provided in August 2023 and August 2024 enabled the studio to expand production, resulting in additional orders between November 2023 and December 2024.

LAC continues to uplift its artists, offering them the freedom to pursue their artistic dreams while transforming their lives.

Impact:

Investments in production capacity have led to sustained business expansion and increased employment.



Images: Love Art Ceramics | Facebook & Instagram

Women of Worth: Empowering Women Through Craft.

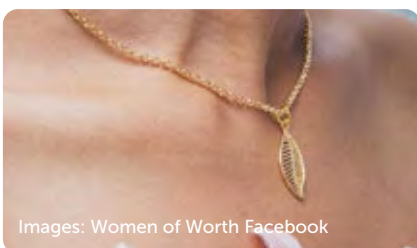
CAPE TOWN, SOUTH AFRICA

Founded in 2019 and officially registered in January 2020, Women of Worth (WOW) was established by Thurzil, who grew up witnessing the struggles of women in the Cape Flats. His vision was to empower women by providing them with jewellery-making skills and creating opportunities for employment and economic independence.

2024. A further grant in August 2024 was invested in establishing furnished workshop premises and sourcing materials like beads, pendants, and components. This resulted in new product additions such as beaded sunglass cords and earrings. From September to December 2024, new and replenishment orders supported WOW's continued growth and impact.

Replenishment orders for eight stores in FY 22/23 supported WOW's growth. In August 2023, WOW received a grant to design and develop a new header card aimed at the international tourism market. By FY 24/25, WOW expanded to 14 stores, leading to increased replenishment and new orders by August

Impact: Women from disadvantaged backgrounds have gained valuable skills, leading to employment and income generation. At the same time, the expansion into new stores and product lines has strengthened WOW's sustainability and market reach.



Images: Women of Worth Facebook





Sedilaka Craft: Preserving Tradition and Creating Opportunity.

JOHANNESBURG, GAUTENG, SOUTH AFRICA

Sedilaka Craft is a marketing and sales entity dedicated to promoting traditional and contemporary handmade products from South Africa. Specialising in managing a skilled team of weavers, they produce authentic Zulu Ilala palm woven baskets, bowls, and trays.

Through strategic support, including grants from Tourvest Destination Retail in August 2023 and August 2024, along

with significant orders in FY 23/24 and FY 24/25, Sedilaka Craft continues to grow.

Their products are now showcased in 9 stores across key locations, including Indaba Lifestyle O.R. Tambo, Out of Africa O.R. Tambo, Out of Africa Sandton City, Made in SA O.R. Tambo, Out of Africa Cape Town International Airport, Out of Africa CT V&A, Orpen Park Shop KNP, Out of Africa Kruger Mpumalanga Airport, and

Skukuza Park Shop KNP. This expansion ensures greater market access and sustained economic empowerment for artisans.

Impact:

Investments in production capacity have led to sustained business expansion and increased employment.



Images: Sedilaka Craft Facebook

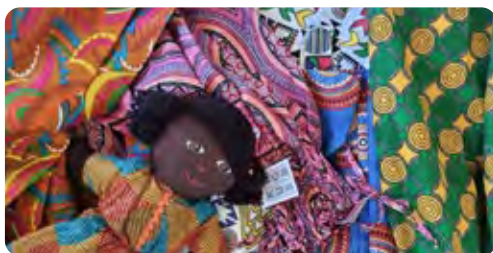


Image: Zakile Designs Facebook

Zakile Designs.

SOUTH AFRICA

Founded by Diane Sayed, Zakile Designs combines a passion for dolls and experience in the clothing industry to create unique, high-quality products. Initially launched with dolls at the Made in South Africa O.R. Tambo store, the brand quickly expanded to include wax print girls' dresses, which became best-sellers.

Zakile Designs plays a vital role in job creation and skills development, training young people in sewing within local communities. With strong orders between September 2023 and December 2024, the brand continues to thrive.

Tourvest Destination Retail has supported Zakile with grants for supplier development, fabric procurement, and operational support. Zakile products are now available in 46 Tourvest Destination Retail stores, further expanding its reach and impact.

Impact: Zakile Designs has significantly contributed to job creation and economic empowerment by training young people in sewing, fostering entrepreneurship, and providing employment opportunities. The brand's expansion into multiple stores highlights its success in the local market.

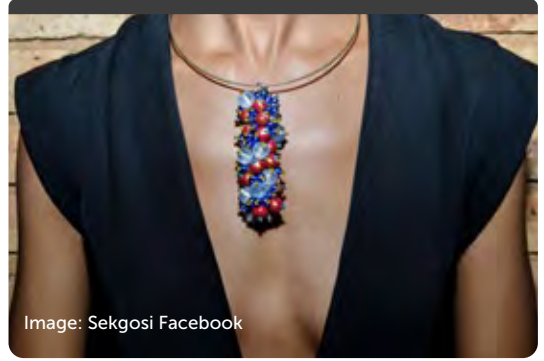


Image: Sekgosi Facebook

SEKGOSI Expands Market Reach with Grants and Retail Support.

SOUTH AFRICA

SEKGOSI, a creative studio by designer Lesego Lekgoe, specialises in contemporary hand-beaded jewellery. Recognized as a Top 10 Professional at South African Jewellery Week 2021, it received grants in August 2023 and 2024 for development and displays. In May 2024, its first order was placed for Indaba Lifestyle at O.R. Tambo, expanding its retail presence.

Impact:

SEKGOSI has provided a platform for contemporary South African jewellery design, enabling market exposure and economic growth. The grants and orders have supported brand's retail expansion.



Images: TDR

Creative Inclinations (Pty) Ltd.

JOHANNESBURG, GAUTENG, SOUTH AFRICA

Creative Inclinations Pty (Ltd) is a leading manufacturer of screen-printed and embroidered branded clothing based in Rosettenville, Johannesburg. Specialising in a variety of South African and South African Flag branded items, they provide competitive pricing across 17 stores in the Tourvest Destination Retail portfolio. In August 2024, a grant was awarded to support their business growth.

From Beads to Brilliance: Elevating South African Souvenirs.

SOUTH AFRICA

Folo Alona Craft (Pty) Ltd has been a valued partner of Tourvest Destination Retail for many years, renowned for his distinctive beaded "Folo Figures." Recently, he expanded his product line to include Mandela-branded fridge magnets, enhancing his offerings in the souvenirs category. In August 2024, a grant was awarded to support Folo's ongoing development. This funding has enabled substantial orders for FY23/24, with additional orders placed for 24/25.

Impact:

This initiative boosts the local artisan economy by funding Folo Alona Craft's expansion, creating jobs and promoting cultural heritage through traditional crafts, strengthening community identity and pride.

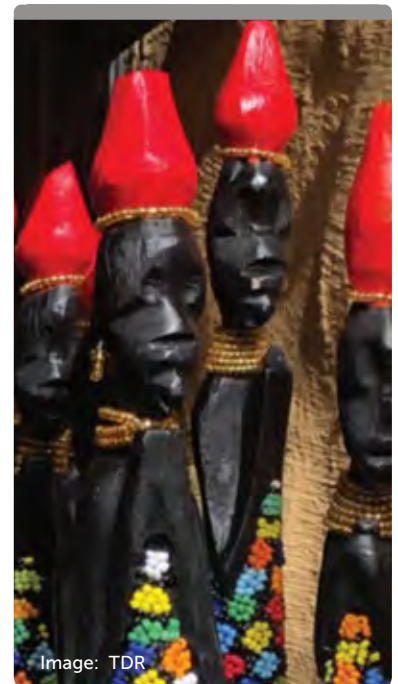


Image: TDR



Jozi CMT



Stitching Success: Supporting Local Textile Innovation.

SOUTH AFRICA

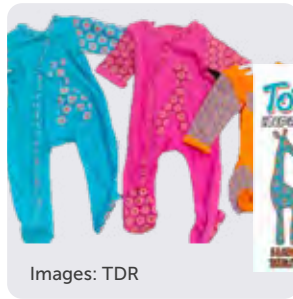
Jozi CMT (Pty) Ltd, owned by Winny Ramoloto, was established in 2006 and formally registered in 2014. It specialises in CMT infant wear. After an initial meeting with Tourvest Destination Retail in 2020, the development process was delayed due to COVID-19. However, in March 2024, collaboration resumed, leading to the creation of a baby clothing range for Out of Africa Kids and Out of Africa.

Featuring the Totoma signature detail of Shwe-Shwe fabric, the range includes bibs, beanies, long sleeve/long-sleeved baby grows, vests, and rompers. A grant in May 2024 supported fabric procurement, followed by additional funding in August

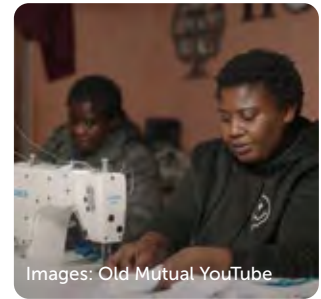
2024 for further development. Since its launch, the range has experienced strong demand, with multiple rounds of repeat orders for Out of Africa Kids and Out of Africa, generating significant orders between June and December 2024.

Impact:

This initiative has empowered Winny Ramoloto to expand Jozi CMT's product range and strengthen business sustainability. The range preserves cultural heritage while meeting market demand by incorporating traditional Shwe-Shwe fabric. Strong repeat orders highlight consumer interest, driving economic growth and job creation.



Images: TDR



Images: Old Mutual YouTube



Aaron's Pin Thread Jewellery



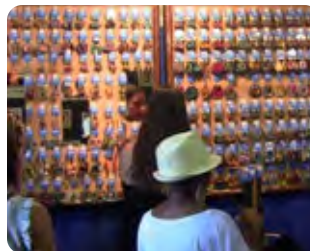
Traditional Techniques, Modern Growth.

SOUTH AFRICA

Aaron's Pin Thread Jewellery specialises in intricate pin thread art, crafting unique earrings and pendants in vibrant colours and geometric designs. Previously supplying Tourvest Destination Retail through an agent, Aaron Ndaba began direct supply in May 2023. With a financial grant in August 2023, we supported the development of new colourways and a swing ticket for his range.

Orders were placed in 5 stores, Out of Africa O.R. Tambo, Out of Africa Sandton, African Origins O.R. Tambo Domestic and International Departures, and Made in SA O.R. Tambo.

Impact: initiative enabled Aaron to expand his business, gain direct retail access, and refine product presentation. Increased store placements drive economic growth while promoting traditional craftsmanship.



Images: Aaron's Pin Thread Facebook

Mzoe Ceramics: A Legacy of Art and African Identity.

SOUTH AFRICA

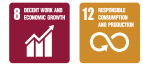
Founded in 2018 by two brothers, Mzoe Ceramics specialises in hand-painted African ceramics, inspired by their late father's pottery legacy. After initial discussions with Tourvest before COVID-19, they reconnected in July 2023 with the Cape Town Tourvest Destination Retail Team to develop a signature range. The designs capture African sunsets, animal prints, and botanical elements tailored for Indaba Curios and Kraal Kraft in Hout Bay. They then tailored a special "elephant sunset story" for Addo Elephant National Park. A colourful African Penguin range is in progress for Boulders Beach, with initial orders scheduled for delivery in November 2024.

Impact:

This initiative preserves cultural heritage by showcasing African-inspired ceramics while providing economic opportunities for local artisans. The expansion into national parks and retail stores strengthens small business sustainability and promotes African artistry.



Images: Mzoe Art Facebook



Maasai-Inspired Elegance Finds a New Market.

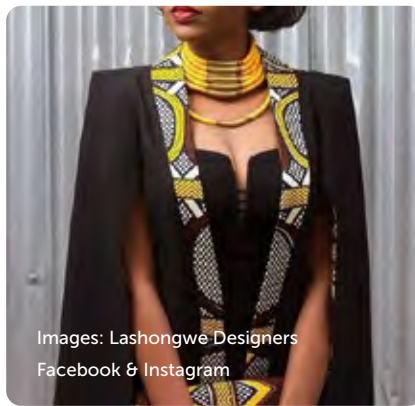
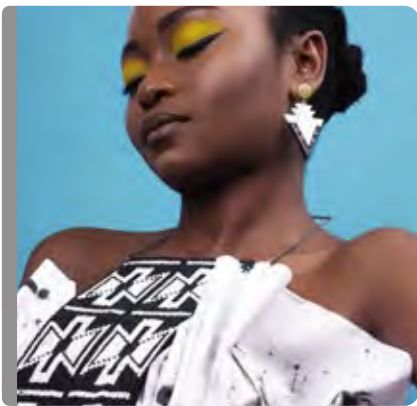
SOUTH AFRICA

Founded by Njabu Griffiths, Lashongwe Designers Holdings (PTY) Ltd creates jewellery that blends African tradition with contemporary design. In April 2024, Njabu presented her collection, leading to the expansion of a Maasai-inspired range in traditional colours. Over 6 months, Tourvest Destination

Retail supported the development of a header card for the collection, and the first orders were placed in October 2024 for Out of Africa O.R. Tambo and Out of Africa Sandton. The range is performing well, with a repeat order in November.



Impact:
This initiative promotes African artistry while providing economic growth for local artisans.



Images: Lashongwe Designers Facebook & Instagram



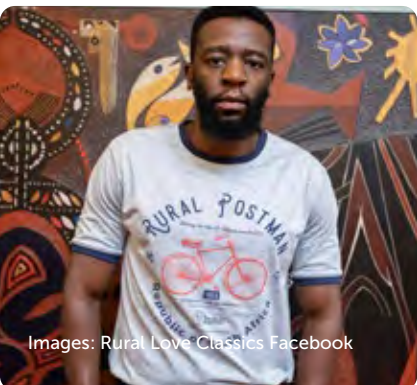
Rural Love Classics: Tradition Meets Contemporary Fashion.

GAUTENG, SOUTH AFRICA

Rural Love Classics is a South African clothing brand specialising in ready-to-wear fashion, inspired by old rural traditions and practices. Founded by Katlego Mogadima, Rural Love Classics blends traditional rural influences with modern fashion. Since 2022, his range has been stocked in 8 Tourvest Destination

Retail stores are performing exceptionally well. However, demand exceeded supply, requiring manufacturing support. We connected Katlego with a trusted T-shirt supplier and provided a grant for stock purchases.

Impact: By providing financial and logistical support, this initiative strengthens local fashion entrepreneurship, promotes job creation, and ensures consistent product availability in retail stores.



Images: Rural Love Classics Facebook



Young Entrepreneurs Bringing African Prints to Retail.

CAPE TOWN, SOUTH AFRICA

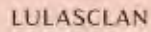
Founded by Tariro (14) and Michaela (11) Marikano, Shumba Girls transforms sustainably sourced African prints into unique accessories. Their love for fabrics began as a hobby, styling their doll clothes before evolving into a business. Despite dyslexia, Tariro is very creative. She is the brain behind all the products made whilst Michaela is good with Marketing and Finance.

Joining the Commerce Crew Club in 2023 helped them develop their business skills. In February, they met with the Tourvest Destination Retail Cape Town Team, which led to their products entering Made in SA V&A in April 2023. Their shweshwe fabric range—featuring wallets, coin purses, hair accessories, and small bags—expanded to Out of Africa Cape Town Airport in August 2023.



Impact:
This initiative nurtures young entrepreneurship, fosters financial independence, and promotes African craftsmanship, empowering the next generation of female business leaders.





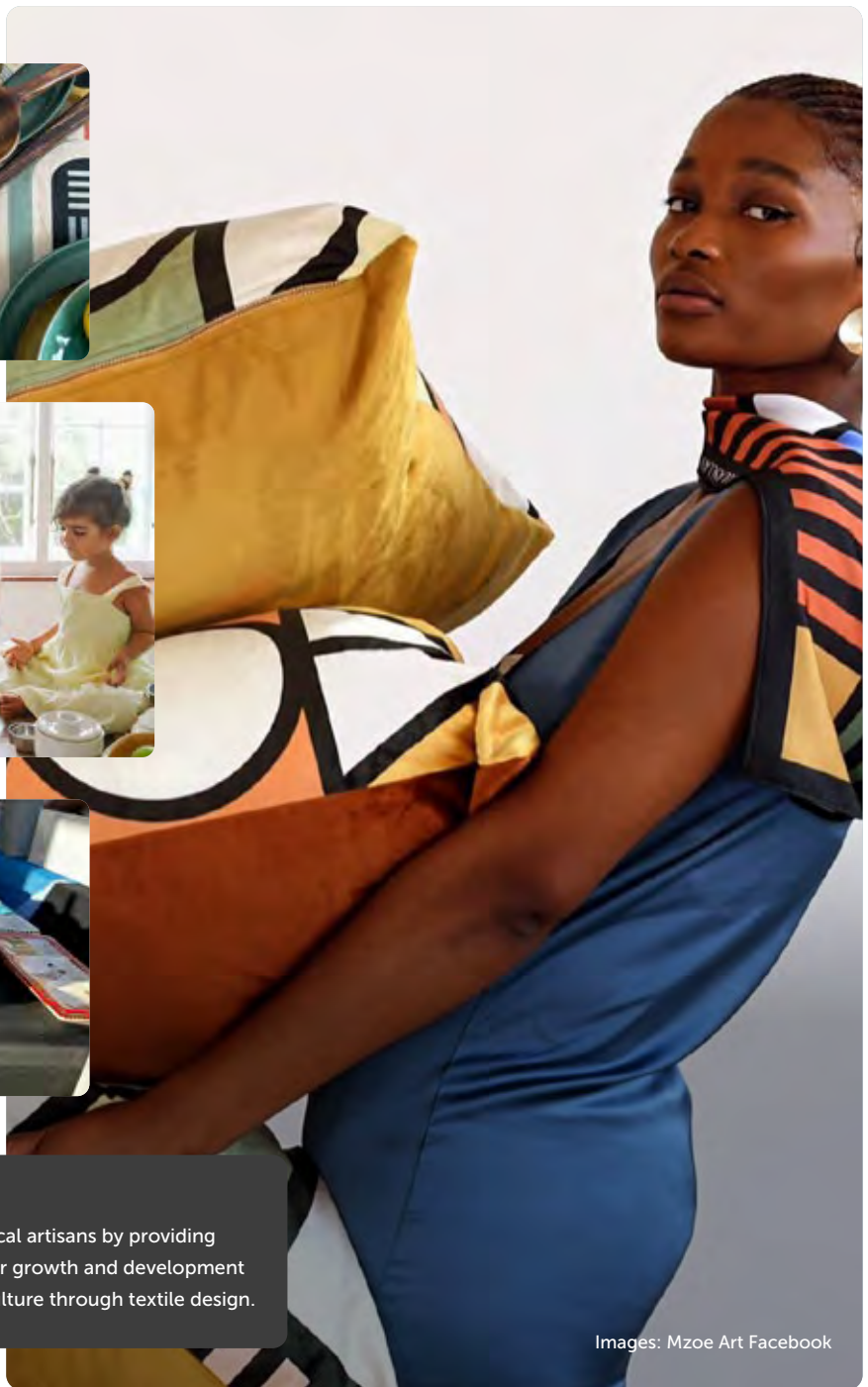
Weaving Stories: The Lulasclan Narrative.

GAUTENG, SOUTH AFRICA

Lulasclan, founded in 2016 by Bonolo Chepape, is a contemporary textile and product design studio celebrating Africa's beauty and cultural richness.

What began as a small scatter cushion business in Rustenburg has grown into a textile and product design studio. Bonolo's passion for patterns, art and design is supported by her mother, Anna Chepape, and aunt, Tshupi Letsie, who have been instrumental in building the brand.

Lulasclan aims to preserve and document African culture through its unique designs. The studio received a grant from Tourvest Destination Retail for supplier development, alongside an initial order from the Indaba Lifestyle store.



Impact:

The initiative empowers local artisans by providing them with opportunities for growth and development while preserving African culture through textile design.

Images: Mzoe Art Facebook

Mitchell's Plain School of Skills.

MITCHELL'S PLAIN, CAPE TOWN, SOUTH AFRICA

Tourvest Destination Retail is committed to supporting institutions that empower individuals with disabilities through education and skills development in the tourism sector. In 2019, this mission led to a partnership with Mitchell's Plain School of Skills (MPSOS), a school dedicated to learners with learning disabilities.

Located in an impoverished area, MPSOS provides a supportive environment where students develop essential skills.

Since 2019, Tourvest has focused on the school's food study students, funding excursions, purchasing chef kits, sponsoring school fees and trips, and even providing job opportunities within our retail stores.

Impact:

This initiative fosters long-term change by extending support beyond education and into employment, ensuring students transition successfully into the tourism and hospitality industry.



Image: Mitchell's Plain School of Skills



Image: TDR



Inspiring Future Generations Through Literature.

GAUTENG, SOUTH AFRICA

Albi Mavimbela, the author and graphic illustrator of four African-inspired children's books, showcased his work in mid-2024 and received a grant to support the printing of his books. This initiative aims to enrich children's literature and foster cultural awareness. Orders for the

Out of Africa Kids Store at O.R. Tambo International Airport will be placed in early 2025, providing young readers with engaging stories that celebrate African heritage and promote literacy, empowering future generations through the power of storytelling.

Impact: This initiative promotes cultural awareness and literacy among children by providing engaging, African-inspired literature, empowering young readers with diverse stories.



Images: Albi Mavimbela Facebook



G HAPPY TRANSPORT SERVICES



G Happy Transport Services.

SOUTH AFRICA

G Happy Transport Services, a 100% black women-owned business, has experienced significant growth thanks to the partnership with Tourvest Restaurants & Taverns, which began in 2013. Initially operating with a single van, G Happy now boasts a fleet of five vehicles, thanks to Tourvest Restaurants & Taverns support in purchasing four additional vans. This expansion has allowed G Happy to diversify its income by taking on new clients and launching a new business venture, the G Happy Chicken and Pig Farm. Tourvest Restaurants & Taverns is also helping establish a supply chain to incorporate eggs from the farm into restaurant operations, fostering further growth for both companies.

Impact: This collaboration has allowed G Happy Transport Services to expand its fleet, generate additional revenue through new ventures, and create a sustainable supply chain for Tourvest’s restaurants, benefiting both businesses and their communities.



Image: Adobe Stock



Images: Tourvest Restaurants & Taverns



Skills Development for People with Disabilities.

WELLINGTON, WESTERN CAPE, SOUTH AFRICA

Tourvest Restaurants and Taverns has proudly partnered with the Wellington School of Skills to support skills development for students facing learning barriers. The school provides specialised education to 73 students with mild to moderate intellectual disabilities, ensuring they receive the necessary support to thrive.

These students, while talented in many respects, face challenges keeping pace with traditional academic structures. The School of Skills offers an alternative learning approach tailored to their unique needs, helping them develop practical abilities for future employment opportunities.

Tourvest Restaurants & Taverns has contributed towards the academic and vocational training requirements of these students. This funding has been utilised to provide chefs’ uniforms and essential kitchen equipment, ensuring that learners have the tools needed to gain hands-on experience in culinary training.

Impact:

By investing in the development of students with disabilities, we are not only empowering young individuals but also fostering a more inclusive and skilled workforce for the future. Tourvest Restaurants & Taverns remains committed to making a meaningful impact in the communities we serve.



Image: Adobe Stock



Socio-Economic Development Initiatives

Socio-Economic Development is an approach that aims to improve communities by equipping them with the skills and knowledge they need to lift themselves out of poverty. These initiatives are achieved through various forms of support, including donations and sponsorships aimed at investing in education, agriculture, training, and more.

The main objective of the programme is to assist community members in building social enterprises, creating jobs, and ending poverty. Tourvest is committed to involving community members in working together to make their communities better by identifying needs, wants, and challenges. With the knowledge gained, beneficiaries can identify and implement solutions that benefit everyone residing in the community over the long term.





Celebrating Student Success in Botswana's Schools.

MAUN, BOTSWANA

Moeti Junior Secondary School, located in Maun, Botswana, serves students from grades 8 to 10. At the end of each academic year, the school hosts award ceremonies to honour the top-performing students in various subjects. Sense of Africa Botswana supported this initiative to encourage academic excellence and motivate students to continue excelling in their studies. This collaboration underscores the commitment to nurturing the next generation of leaders and scholars in the region.

Impact: The initiative aims to motivate students to excel in their studies by recognising their achievements. By supporting the award ceremonies, Sense of Africa Botswana fosters a culture of academic excellence, encouraging continuous improvement and commitment to education.



Images: Adobe Stock



Sense of Africa Supports Graduation at Tshidilo Stimulation Centre.

MAUN, BOTSWANA

Tshidilo Stimulation Centre in Maun, Botswana, provides specialised education and therapy for children with disabilities through a tailored curriculum. With support from private sector partners, including Sense of Africa, the centre hosted a memorable Graduation Ceremony for its students. This celebration highlighted the significant impact of community contributions in empowering young learners.

Impact: The support provided by Sense of Africa enhanced the Graduation Ceremony, creating an unforgettable event for students and their families. The initiative highlights the importance of partnerships in providing access to specialised education, enabling children with disabilities to achieve their milestones and realise their potential.



Empowering Schools for a Sustainable Future.

SOUTH AFRICA

TTS donated to Nicarela Charity, a foundation dedicated to raising funds for over 30 beneficiaries, including orphanages, shelters, and schools for those with special needs.

The charity organises unique events supported by volunteers and donations, with proceeds benefiting various causes.

Impact:

This donation enables Nicarela Charity to expand its outreach efforts and strengthen its ability to host impactful fundraising events. By supporting their mission, the contribution helps create meaningful opportunities for positive change within underserved communities.



Images: Facebook | Nicarela Charity



Image: Adobe Stock



Tongaat Tornado Natural Disaster Relief.

KWAZULU-NATAL, SOUTH AFRICA

The Gift of the Givers Foundation is providing crucial relief following the Tongaat Tornado, which displaced families, destroyed schools, community halls, and disrupted electricity infrastructure.

TTS contributed towards rebuilding the community and further donated to support an employee whose family member was directly affected, leaving them displaced with limited resources.

Impact: This initiative highlights a collective effort to restore stability and provide much-needed support to those impacted by the disaster.



Images: Gift of the Givers Foundation | Website





One Tourvest: Mandela Day Impact.

Making the 67 minutes count.

SOUTH AFRICA

Tourvest divisions, Tourvest Accommodation (aha), Tourvest Travel Services (TTS), Tourvest Travel Retail, Tourvest Destination Management (TDM), Tourvest Financial Services (TFS) and Tourvest Adventures, united on Mandela Day to create meaningful change across local communities, demonstrating a shared commitment to making a difference.



TTS, TFS, aha, and Singapore Airlines joined forces to support Nkosi's Haven by providing essential food supplies and ensuring that residents received nutritious meals. This collaboration showcased how collective efforts can uplift those in need.



Images: TTS



Itekeng Care Centre Maologane Primary School

Tourvest Adventures (Mankwe GAMETRACKERS), alongside Sun City and other concessionaires, took strides to enhance the Itekeng Care Centre in North West Province. The improvements included establishing a sustainable vegetable garden, adding fencing, painting, and donations of food, stationery, blankets, and furniture. Additionally, a borehole pump was installed at Maologane Primary School in Sun City, securing a reliable water supply after months of shortages.

Image: Pexels | Greta Hoffman



Image: www.enviroleg.co.za



TDM spearheaded the "Bag of Hope" initiative for the H.O.M.A.C Orphanage in Johannesburg. Backpacks filled with comfort items such as teddy bears, hairbrushes, books, socks, and beanies brought smiles to children facing adversity.



In Mbombela, Sense of Oceans supported Bettie's Haven by collecting non-perishable items like rice, canned foods, samp, mealie meal, and sugar to assist vulnerable women and children.



Images: TDM



Thandabantu Community Care Centre

Tourvest Travel Retail significantly impacted by donating money to the Nelson Mandela Children's Hospital and improving the facility with fresh paint. The division's employees at O.R. Tambo Airport also extended its efforts to the Thandabantu Community Care Centre in Springs, providing food, soft toys, a new gas stove, and refurbishing the dining room to create a more welcoming space. Meanwhile, the Kruger National Park Parks Shops team supported local education and childcare initiatives, supplying meals and essentials to children and their caregivers.



"TITG's initiatives demonstrate the power of sustainable tourism in fostering community development, preserving cultural heritage and promoting environmental conservation. By partnering with local leaders and residents, TITG ensures that the benefits of tourism are shared and sustainable, creating a positive impact on communities across South Africa and beyond."

Tendani Nelwamondo, Chief Sustainability Officer at Tourvest Integrated Tourism Group.

Image: www.britannica.com



Image: TDR

In addition, leading up to Mandela Day and on the day itself, the ladies from Cupcakes of Hope knitted 26 blankets from our donated squares, which were given to children with cancer. A donation was made to support the purchase of wool and needles.

Mandela Day Impact Continued.

Tsitsikamma EduCare Ilitha EduCare

Our Cattle Baron team visited Tsitsikamma EduCare and Ilitha EduCare in Storms River Village to share a special treat with 60 pre-school children. The children were delighted as they enjoyed a meal of Oros, chicken strips, and chips, making the day extra special. Beyond the meal, the visit provided a moment of joy, connection, and care for these young learners.



Images: Tourvest Restaurants & Taverns

Bongani Day Care

The Cattle Baron Satara team visited Bongani Day Care in Verveldile, where they served sandwiches, juice, and fresh fruit to 85 children. This initiative aimed to provide not just nourishment but also moments of joy and care for the young learners. The team embraced the opportunity to make a difference, reinforcing their commitment to uplifting the communities around them. Through simple yet meaningful gestures, we continue to contribute to a brighter future, demonstrating that positive change begins with acts of kindness.



Images: Tourvest Restaurants & Taverns

Humulani Day Care

The Cattle Baron Skukuza team visited Humulani Day Care to bring joy and nourishment to 110 children and their 10 carers.

The team treated them to a delicious breakfast buffet with snacks and juice, ensuring they had a hearty and energising start to the day.



Images: Tourvest Restaurants & Taverns

Adele and Janet Community Project

The Quay Four team visited the Adele and Janet Community Project in Mitchell's Plain, preparing and serving a hot meal of soup and bread. While prioritising women and children, the initiative ensured no one in need was turned away. Through these efforts, our teams reaffirmed the spirit of Ubuntu and the lasting impact of small acts of kindness.



Image: www.quay4.co.za



A Helping Hand: Supporting Springs' Most Needy.

SPRINGS, GAUTENG, SOUTH AFRICA

Thandabantu Community Centre, located in Geduld Springs, supports those in need, including the homeless, the poor, and abandoned children. Their mission also extends to aiding individuals living with HIV/AIDS, the elderly, and victims of abuse. The centre provides warm meals and runs a feeding scheme every Wednesday, caring for 30 children and offering shelter to 15 residents, including two elderly women with disabilities.

As a registered Non-Profit Organisation, Thandabantu relies on the generosity of local businesses and community members. The O.R. Tambo Airport staff raised money, matched by Tourvest Destination Retail, to provide children with food, blankets, and toys.

Impact: The initiative provides essential support to vulnerable populations, ensuring access to food, shelter, and care for those in dire circumstances.



Images: Thandabantu Community Centre | Facebook

A New Chapter for Chamabondo Primary: Essential Donations for Learning.

CHAMABONDO PRIMARY SCHOOL, VICTORIA FALLS, ZIMBABWE

On 16 May 2024, Chamabondo Primary School hosted a handover ceremony marking a pivotal advancement for the institution. The event celebrated the delivery of 72 chairs and 36 desks, generously donated to enhance the school's learning environment.

Key contributors included the Rotary Club of Victoria Falls and Wild Horizons, alongside the heartfelt efforts of David and Susan Makanza, who facilitated this international gesture with donors George and Sue Blenkhorn from Australia.

The furniture donation symbolises a shared commitment to fostering educational excellence and creating a brighter future for local students.

Impact: This contribution fosters better engagement and academic performance, highlighting the power of community collaboration in driving positive change.



Images: Wild Horizons



Community Impact: Wild Horizons Donate to those in need.



ZIMBABWE

REDUCED INEQUALITIES

Wild Horizons continues demonstrating its commitment to community support through meaningful donations to reduce inequalities. In October, they extended assistance to two local organisations.

A medium-sized suitcase of clothes was donated to the Old Age Home, acknowledging the importance of caring for our elderly citizens.

Furthermore, a medium-sized box containing assorted clothes, shoes, and kitchenware was contributed to Rose of Charity, an organisation dedicated to aiding children in need. These initiatives were made possible through the generous support of our clients and contributions of old stock from our shops.

Impact: Wild Horizons remains steadfast in its dedication to positively impacting the lives of individuals within the community, ensuring that no one is left behind.



Images: Wild Horizons

QUALITY EDUCATION



November marked another milestone in our efforts to promote quality education. Lisa Harris, a valued client and active supporter of our philanthropic initiatives, made a generous donation.

This follows her 2022 contribution, which funded the purchase of 10 central processing units and examination fees for 10 pupils at Chinotimba Primary School.

This year's donation enabled the acquisition of an additional 10 central processing units, bringing her total contribution to 25 units.

Impact:

These resources empower students with essential skills in information technology, fostering an environment of growth and learning. Lisa's contributions exemplify the profound impact of investing in education, shaping future leaders and equipping them to contribute meaningfully to society.



Images:
Wild Horizons



DONATION OF HOSPITAL EQUIPMENT & SCHOOL FURNITURE

In a remarkable collaboration, the Rotary Club of Victoria Falls, supported by Wild Horizons, received a fully equipped container from esteemed partners: The Rotary clubs of Pakenham, Berwick, Casey, Cranbourne, and Dandenong in Australia.

This generous donation included:

- 30 hospital beds with mattresses and side drawers,
- critical medical equipment such as
 - a resuscitation machine,
 - baby cribs, and
 - transfer trolleys
- Pharmaceutical supplies were provided to bolster healthcare services.

On the educational front, the donation comprised 72 chairs and 36 desks, enhancing learning environments for students.

Impact: This initiative highlights the power of international partnerships in addressing community needs and underscores the shared commitment to improving healthcare and education in underserved areas.



Image: Adobe Stock



Images: Wild Horizons



VICTORIA FALLS HOSPITAL DONATION HANDOVER

On 20 May 2024, Victoria Falls Hospital hosted a significant handover ceremony to mark the delivery of vital medical equipment and supplies.

The donation included:

- 30 hospital beds,
- 30 mattresses,
- 30 side drawers,
- a resuscitation machine,
- blood pressure monitors, and
- essential pharmaceutical drugs.

The event was attended by prominent individuals such as the District Medical Officer, hospital staff, and representatives from the Rotary Club, Wild Horizons, Chisuma Clinic, Marist Brothers, and Mkhosana Adventist Primary School. This initiative underscores a collective commitment to strengthening healthcare services in the community.

Impact: This donation has significantly enhanced the hospital's capacity to provide quality healthcare, improving patient comfort and access to essential medical services. It represents a meaningful step towards strengthening the overall health infrastructure in the community.



A Journey of Firsts: Transforming Lives Through Travel.

SOUTH AFRICA

Tourvest Travel Services, in collaboration with The Real Network, launched the First-Time Traveller initiative, offering 15 individuals the chance to experience travel for the first time. The journey was filled with unforgettable moments, from taking their first flight to dipping into Cape Town's chilly waters and staying in a luxury hotel. Witnessing their excitement and apprehension during take-off made the experience even more special.

This initiative was designed to give staff members—many of whom work in the travel industry but have never travelled themselves—the opportunity to experience travel first-hand. In 2024, two trips were hosted, each catering to 20 people. Special thanks to Lift Airlines for ensuring a smooth journey and AHA Harbour Bridge Hotel for their warm hospitality.

Impact:

Life-changing travel experiences broaden perspectives and create lasting memories for individuals who may not have had the means to travel before.

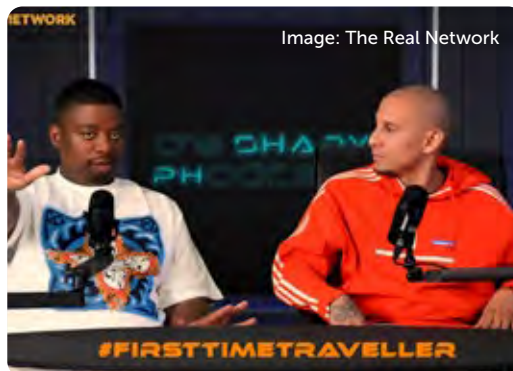


Image: The Real Network



Image: TDM



Image: TDM



Image:aha



Image: Lift

08

Skills Development Initiatives

Tourvest is committed to making a meaningful contribution to skills development through our human resources initiatives. We provide learners from previously disadvantaged communities, particularly those residing within our host communities, with opportunities to benefit from our learnership, internship, and graduate programmes.





TFS Creates Opportunities for Youth Development.

SOUTH AFRICA

Tourvest Financial Services (TFS) promotes inclusive economic growth and sustainable employment. Through initiatives such as learnership programs, staff bursaries, and the Youth Employment Services (YES) Programme, TFS actively fosters youth empowerment and lifelong learning. These efforts align with their commitment to quality education, skill development, and creating equitable opportunities for all.

As part of the YES Programme, TFS provides 14 young individuals with 12-month learnerships in bookkeeping, event organising, and general work. By equipping youth with practical skills, TFS contributes to their successful transition into the workforce and supports socio-economic upliftment in communities.

Impact: The project has provided valuable hands-on experience to youth, enabling them to gain industry-specific skills and confidence. This effort has strengthened local communities by fostering self-reliance and building a foundation for long-term economic growth.



Images: Youth Employment Service | Facebook

Mentoring Tomorrow's Tourism Leaders.

SOUTH AFRICA

Tourvest Destination Management (TDM) has provided an Unemployed Learnership programme for several years, with annual intakes ranging between 10 and 20 learners. In 2023, 10 learners were sponsored with support from Dertouristiek and Kuoni Private Safaris. Participants work towards a Higher Certificate in General Travel through six months of theoretical study and practical training. Each learner is paired with an experienced mentor, offering guidance and support to prepare them for careers as Tour Consultants and Travel Specialists.

Impact: The programme equips unemployed individuals with professional travel industry skills and provides mentorship to enhance their employability, confidence, and career prospects.



Images: TDM



Images: TDM

University Partnership Paves Way for Employment Opportunities.

JOHANNESBURG, SOUTH AFRICA



Images: University of Johannesburg

Tourvest Integrated Tourism Group (TDM) partnered with the University of Johannesburg's School of Hospitality and Tourism, hosting 400 hours of practical training for third-year students. TDM proudly employed all participants, showcasing its commitment to equipping future tourism professionals with valuable skills and career opportunities.

Impact: This initiative bridges academic learning with workplace experience, successfully employing all participants and fostering skilled talent for the tourism sector.

Developing Talent Across South Africa.

SOUTH AFRICA

TTS's learnership programmes empower 125 individuals across various regions through initiatives including employed and unemployed learnerships, disability-focused training, and graduate programmes. Spanning Johannesburg, Cape Town, and Durban, the programmes offer practical skills development in General Travel and Contact Centre operations, fostering inclusive opportunities and contributing to South Africa's workforce development.

Type of Learnership	Name of Learnership	Region	Numbers
Employed	Various	All	47
Unemployed	General Travel NQF Level 5	JHB	14
		CPT	9
		DBN	10
Unemployed Disability	General Travel NQF Level 4	DBN	23
		DBN	10
WIL	UJ Initiative	CPT	2
		JHB	1
		JHB	4
Graduate Program			5
Total	-	-	125



Investing in Talent: TFS Bursary Programme.

SOUTH AFRICA

Tourvest Financial Services (TFS) supports employee development by offering bursaries covering 75% of tuition fees for business-relevant courses. In 2024, 8 employees pursued studies in Accounting, IT, Financial Management, Human Resources, Law, Auditing, and Banking. After completing a Law and Compliance course, one employee was promoted to Internal Audit Manager. By fostering education and career advancement, TFS ensures employees gain essential skills that align with the company’s strategic goals, promoting long-term success and professional growth.

Impact: The bursary programme empowers employees by reducing financial barriers to education, fostering career progression, and strengthening workforce expertise. TFS enhances employee satisfaction, retention, and overall business growth by investing in learning.



Investing in Tomorrow: Tourvest's Commitment to Youth Employment.

GAUTENG AND WESTERN CAPE, SOUTH AFRICA

Once again, Tourvest Destination Retail has partnered with YES to offer one-year work experience opportunities for selected candidates within their business. The placements are in various stores at O.R. Tambo Airport and throughout the Western Cape. In FY2024, 23 placements were made, with increased participation in FY2025 rising to 29 placements. The YES expenditure covers registration and management costs, ensuring a structured approach to supporting youth employment.

Impact: Youth unemployment is significantly reduced through valuable work experience and skills development, empowering young people to build their careers.



09

Wellness Initiatives

Tourvest has invested on a wellness programme as an investment plan to benefit our employees and help our employees to improve and maintain better health. The wellness programme assists to educate our participating employees about health and well-being and encourage employees to make compassionate choices. Our wellness programme focuses more on employee full health assessment, dietary needs and mental wellbeing.





Promoting Health: TTS Wellness Day with Pink Drive.

SOUTH AFRICA

TTS organised a Wellness Day for its staff at the Tourvest head office, partnering with Pink Drive to promote cancer awareness. The event provided employees with access to screenings for breast, cervical, and prostate cancer, along with educational sessions on prevention and early detection.

Impact:

TTS's investment facilitated important health checks, helping staff detect potential health issues early and raise awareness about common cancers.

Images: TTS

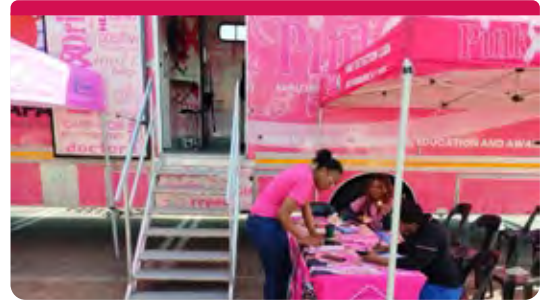


Image: Adobe Stock



Image: www.pinkdrive.org



Victoria Falls Econet Marathon.

VICTORIA FALLS, ZIMBABWE

Wild Horizons showcased its commitment to health and wellness by registering 115 participants for the Victoria Falls Econet Marathon. This strong turnout highlighted the company's focus on fostering active lifestyles among employees. After the marathon, participants gathered at the Lookout Café to celebrate their achievements over breakfast, enjoying stunning views and a supportive atmosphere.

Awards were given to the top three Wild Horizons entrants in the 42km, 21km, and 10km relay categories, recognising their determination and competitive spirit.

Impact: This event strengthened camaraderie while promoting health and fitness within the company.



Images: Wild Horizons



Image: The Econet Victoria Falls Marathon | Facebook



Safety for Client Liaison Officers.

SOUTH AFRICA

Tourvest Financial Services (TFS) prioritises the safety and well-being of its 24 Client Liaison Officers (CLOs), who handle foreign note deliveries and branch cash transfers. To ensure their security, TFS has provided additional personal accident insurance to cover loss of life or disability in case of accidents or robberies. This initiative reflects TFS's commitment to safeguarding its employees while they perform critical duties.

Impact: This initiative provides peace of mind to CLOs and their families, ensuring greater security and support in high-risk roles.



Images: Adobe Stock

Promoting Well-being with the ICAS Programme.

SOUTH AFRICA

Tourvest Financial Services (TFS) is committed to promoting employee well-being through the ICAS Employee Assistance Programme (EAP). This initiative offers psychological, legal, and financial counselling, ensuring employees and their families have 24/7 access to support via phone, email, or online platforms. By investing in health screenings, stress management tools, and mental health resources, TFS fosters a culture of care, improving productivity, teamwork, and job satisfaction. Prioritising employee wellness enhances work-life balance and strengthens TFS's reputation as an employer of choice.

Impact: The ICAS programme provides employees with critical financial, mental health, and legal support, reducing financial burdens and improving overall well-being. This initiative enhances workplace satisfaction, increases productivity, and strengthens employee retention by creating a supportive and healthy work environment.



Images: Adobe Stock and ICAS



Women's Day: Wild Horizons Celebrates Wellness and Growth.

VICTORIA FALLS, ZIMBABWE

On 28 March 2024, Wild Horizons celebrated International Women’s Month with a transformative Women’s Wellness event. Expert speakers shared insights on health, finances, and workplace rights, covering topics like hypertension, diabetes, eyecare, retirement planning, and sexual harassment. This initiative reflects our commitment to empowering women and fostering their growth.

Impact: The Women's Wellness event provided Wild Horizons staff with valuable health and financial knowledge, empowering them to take charge of their well-being. The event reinforced Wild Horizons' commitment to supporting the holistic development and empowerment of its female staff members.



Image: Pexels | Ante Emmanuel



Images: Wild Horizons



Prioritising Health: Tourvest Destination Retail's Wellness Initiative

KRUGER AND EASTERN CAPE REGIONS, SOUTH AFRICA

In June and July 2024, Tourvest Destination Retail launched a staff wellness programme focused on providing flu vaccines and conducting various medical checks. The initiative was implemented in the Kruger and Eastern Cape regions, engaging an average of participants from the workforce. This programme reflects TTR's commitment to prioritising employee health and wellbeing, demonstrating the company's dedication to fostering a healthier work environment.

Impact: Employee wellbeing is significantly improved through the provision of essential health services, leading to a healthier and more productive workforce.



Images: TDR



Image: Adobe Stock

Fostering Health and Well-Being for Father's Day.

VICTORIA FALLS, ZIMBABWE

In honour of Father's Day, Wild Horizons hosted a comprehensive Men's Wellness event in Victoria Falls on June 28, 2024. The programme offered employees valuable insights into physical, financial, and medical well-being, aiming to inspire a healthier and more balanced lifestyle.

The event featured engaging sessions led by industry experts. Coach Mabasa conducted interactive fitness exercises, encouraging staff to embrace active living for mental and physical health.

A Cabs Bank Branch Manager provided practical advice on retirement planning, debt management, and responsible credit use, equipping attendees with tools for financial security.

Representatives from Cenda Eye Clinic highlighted the importance of vision care and conducted complimentary eye tests to detect potential issues early.

Dr. Keche from Parksmed Clinic discussed cardiovascular health, emphasising preventative care and lifestyle adjustments to maintain heart health.

Impact: This successful initiative underscored Wild Horizons' commitment to holistic wellness, empowering employees to prioritise their health, finances, and overall well-being. Staff members praised the sessions for their informative and practical approach.



Images: Wild Horizons

Images Pexels | Greta Hoffman

10

Awards





Wild Horizons Celebrated at the Azta Awards.

In September 2023, Wild Horizons, represented by Barbra Murasiranwa-Hughes and Leandra Muza, proudly attended the prestigious Association of Zimbabwe Travel Agent Awards at the iconic Meikles Hotel in Harare. The event celebrated excellence in the travel industry, and **Wild Horizons** was honoured with two awards: **Best Tour Operator and Best Ground Handler**. These accolades reflect the company's unwavering dedication to delivering exceptional service and creating unforgettable client experiences.



Images: Wild Horizons



Gary Archer Honoured at the Megafest Awards.

In December 2023, **Wild Horizons' CEO, Gary Archer**, was celebrated as a **Strategic Leader** at the prestigious Megafest Awards in Bulawayo. This recognition as **Strategic Leader of the Year** underscores his unwavering dedication to keeping Wild Horizons at the forefront of the tourism industry.

Further cementing his leadership legacy, Gary received the **Strategic Leader of the Year Platinum Award** at the Megafest Conference held in February 2024 at Rainbow Towers in Harare. This esteemed accolade highlights his visionary approach, strategic acumen, and relentless commitment to excellence. Under his guidance, Wild Horizons continues to thrive, navigating challenges and achieving new heights. We are honoured to have such an inspirational leader at the helm of our success.



GARY ARCHER,
WILD HORIZONS' CEO



Images: Wild Horizons



2024 ZimCEO Awards.

In August 2024, Wild Horizons and its **CEO, Gary Archer**, achieved outstanding recognition at the prestigious ZimCEO Awards hosted by the Zimbabwe CEO’s Network. Archer received the **Exceptional Professional Excellence Gold Award**, a testament to his unwavering dedication to professionalism, visionary leadership, and significant contributions to the business sector. His award symbolises the company’s commitment to excellence and innovation in the tourism and hospitality industries.

Adding to this remarkable achievement, two of Wild Horizons’ flagship properties were celebrated with Platinum Awards.

The renowned **Elephant Camp** was honoured as the **Platinum Winner for Responsible Tourism**, highlighting its dedication to sustainability, eco-friendly practices, and positive community

impact. This accolade affirms Wild Horizons’ focus on responsible tourism, ensuring minimal environmental footprints while fostering local development.

Similarly, **Old Drift Lodge** was awarded **Platinum Winner for Best Service Accommodation**, reflecting its exceptional standards in guest service and unparalleled luxury. Known for its meticulous attention to detail and personalised experiences, the lodge exemplifies excellence in hospitality and continues to set the benchmark in Zimbabwe’s competitive tourism sector.

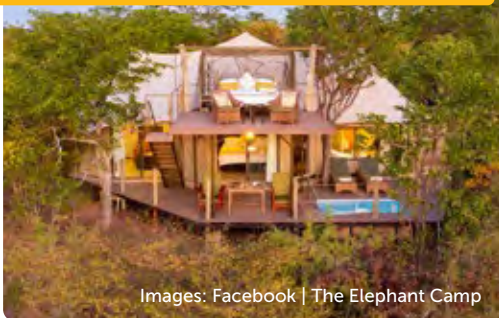
These accolades are a proud milestone for Wild Horizons, reinforcing its leadership in sustainable tourism and its commitment to delivering transformative experiences while inspiring positive change within the business community.



Images: Wild Horizons



THE ELEPHANT CAMP | VICTORIA FALLS



Images: Facebook | The Elephant Camp



OLD DRIFT LODGE | VICTORIA FALLS



Images: Facebook | Old Drift Lodge



Contact details

TOURVEST HEAD OFFICE:



Stonewedge Office Park,
1 Wedgewood Link Road,
Bryanston, 2031,
Johannesburg, South Africa



+27 (0) 11 728 0540

TOURVEST ADVENTURES:



+27 (0) 10 442 5888

TOURVEST TRAVEL SERVICES:



+27 (0) 11 790 0000

TOURVEST ACCOMMODATION:



+27 (0) 87 740 9282

TOURVEST FINANCIAL SERVICES:



+27 (0) 11 603 9000

TOURVEST DESTINATION MANAGEMENT:



+27 (0) 11 676 3000

TOURVEST TRAVEL RETAIL:



+27 (0) 11 221 3200

CREDITS:

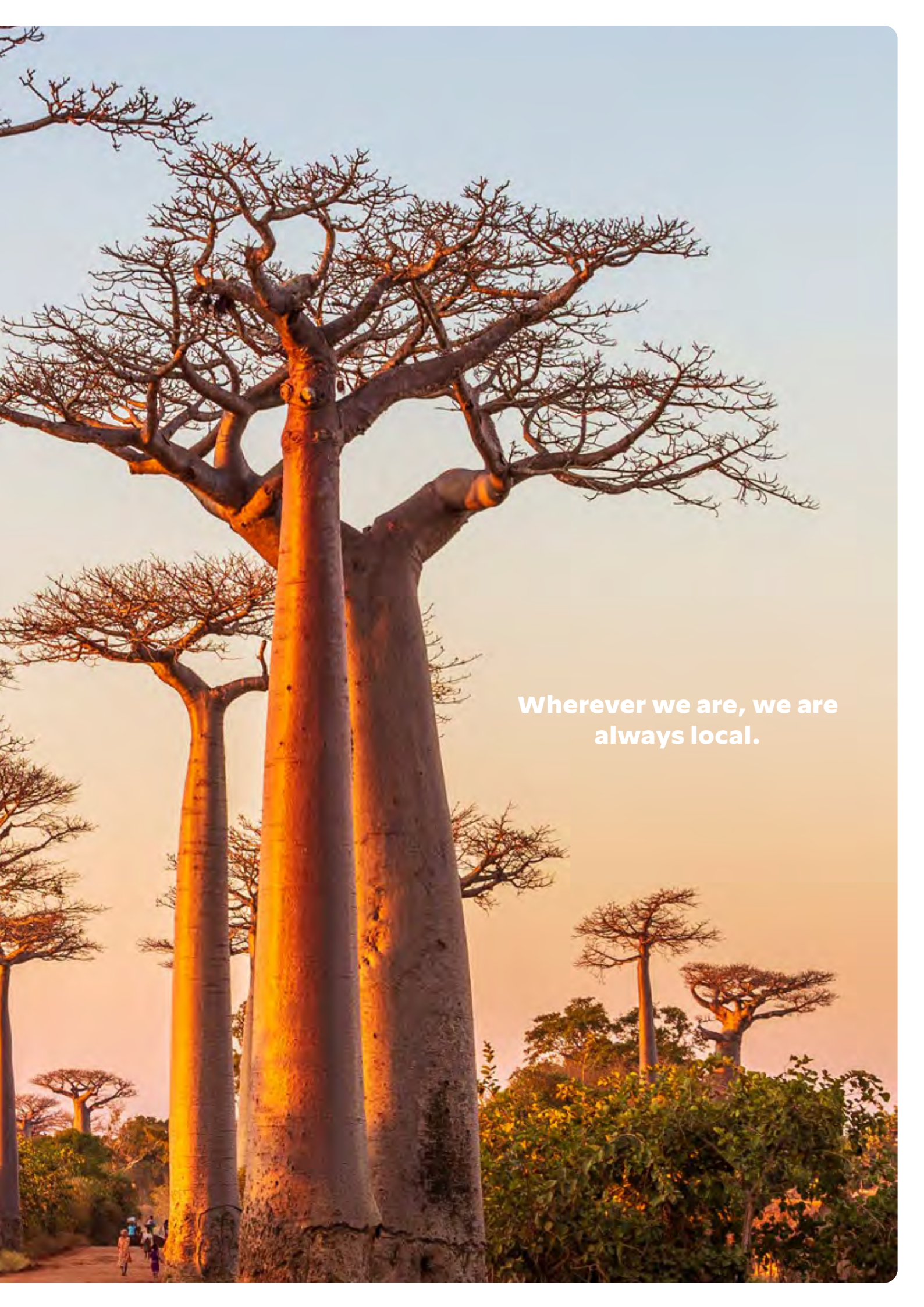
EDITORS:

Kirsti Connolly
Tendani Nelwamondo
Daniëlle Koekemoer
Felicity Vierira

DESIGN:

Art Director Agie Adams
Senior Designer Daniëlle Koekemoer





**Wherever we are, we are
always local.**

